



MINDY SHAPERO

MIDNIGHT PORTAL SCARS

JUNE 20-JULY 24, 2020



NINO MIER GALLERY
7277 SANTA MONICA BLVD
LOS ANGELES, CA 90046



Mindy Shapero is best-known for her sculptures and works on paper that employ a vivid color-palette and myriad use of often humble materials. Through a mixture of surrealism and kitsch, Shapero playfully manipulates her media in a process of accretion and repetition, resulting in objects that dare to contradict their reasons for being. Though Shapero traces visual histories of materials being put to use, her relationship to the material world is not defined by sheer pragmatism. Rather, she perceives how tangible things are capable of transporting us beyond ordinary experience, so that the intangible is just within reach.

The works on paper, much like her sculpture, reflect material and process. Stencil-like remnants of cut paper used to make sculptures are laid down as templates, thus the negative created by the stencil becomes the positive in the drawing. After spray paint and leafing are applied, the negative spaces left in their wake demarcate a dense layer of grids. Through these layers of grids, the ghostly shadows of everyday objects, such as buttons and jewelry, can be found. Accordingly, Shapero treats “viewing” or “looking” as a continuous state of transformation, “a state of mind that allows interiority and exteriority to mix and become a single metaphysical continuum.”

Shapero’s works, mostly abstract in form, are often accompanied by long literary titles that suggest an underlining narrative—a fictional world, perhaps only known to the artist-herself is being played out in her in studio. The artist remarks, “through the traces of the visual histories of materials being put to use, my relationship to the material world is not defined by sheer pragmatism. Rather, it is how tangible things are capable of transporting us beyond ordinary experience, so that the intangible is just within reach.”

Mindy Shapero (b. 1974 in Louisville, KY) earned a Bachelor of Fine Arts from the Maryland Institute College of Art, Baltimore, MD (1997) and a Master of Fine Arts from the University of Southern California, Los Angeles, CA (2003). Shapero’s work has been shown extensively in institutions across the country in exhibitions such as, Highlights from the Collection, Orange County Museum of Art, Newport Beach, CA (2017); NO MAN’S LAND: Women Artists from the Rubell Family Collection, Miami, FL (2015); Storytelling as Craft, Kentucky Museum of Art and Craft, Louisville, KY (2013); New Art for a New Century: Recent Acquisitions 2000-2009, Orange County Museum of Art, Newport Beach, CA, (2010); Like color in pictures, Aspen Art Museum, Aspen, CO (2007); The Uncertainty of Objects and Ideas, Hirshhorn Museum, Washington, D.C. (2006); Thing: New Sculpture From LA, Hammer Museum, Los Angeles, CA (2005), and a two-person exhibition with Jockum Nordström at the Wexner Center for the Arts, Columbus, OH (2006), among others.



Installation shot of Mindy Shapero: *Midnight Portal Scars* (June 20–July 24, 2020). Nino Mier Gallery, Los Angeles, CA



Installation shot of Mindy Shapero: *Midnight Portal Scars* (June 20–July 24, 2020). Nino Mier Gallery, Los Angeles, CA



Installation shot of Mindy Shapero: *Midnight Portal Scars* (June 20–July 24, 2020). Nino Mier Gallery, Los Angeles, CA



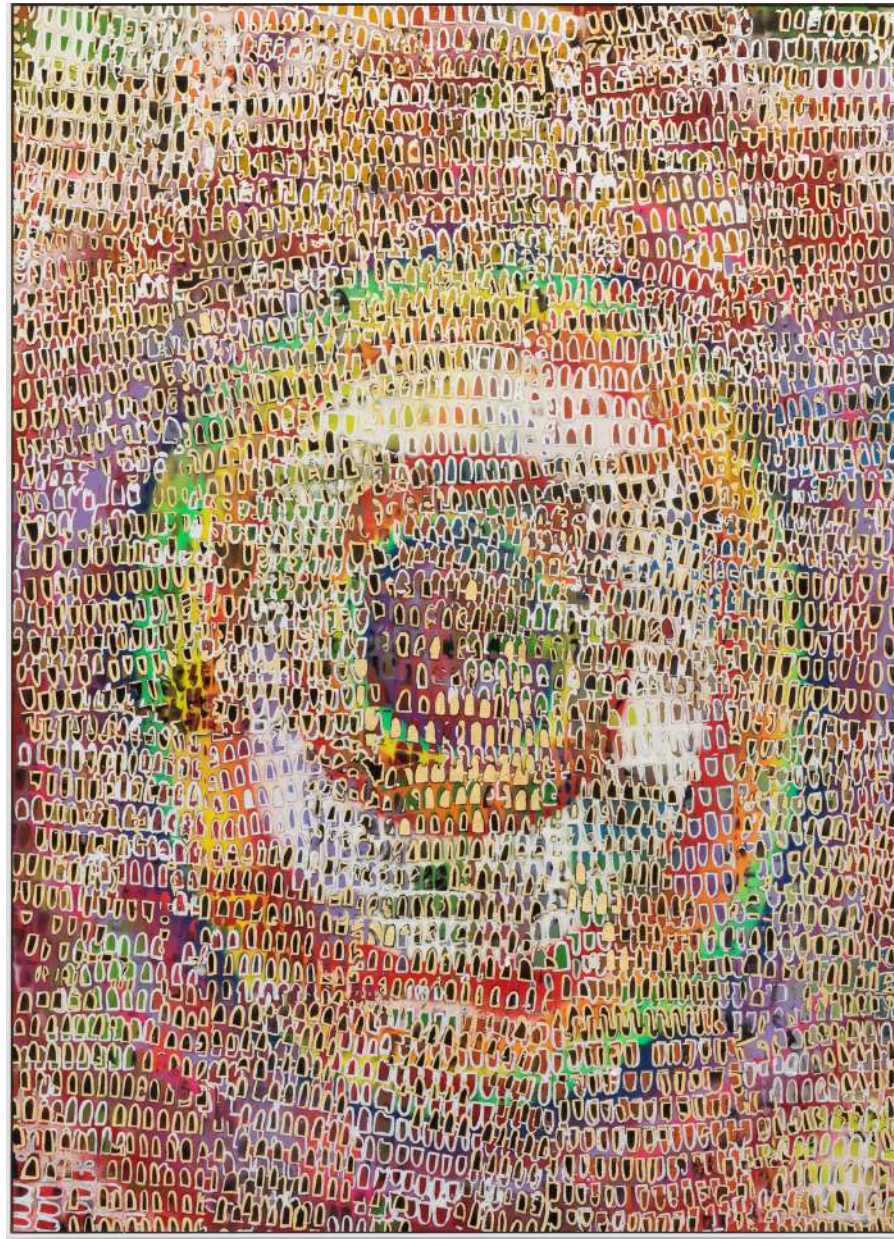
Installation shot of Mindy Shapero: *Midnight Portal Scars* (June 20–July 24, 2020). Nino Mier Gallery, Los Angeles, CA



*Scar of midnight portal, crystallized to black and gold and silver
and silver dot path, 2020*

Acrylic, spray paint, gold and silver leaf on paper, framed
57 1/4 x 35 in, 145.4 x 88.9 cm
(MS20.004)
SOLD





Scar of midnight portal, crystallized to green and black and silver and gold outlines 2020

Acrylic, spray paint, gold and silver leaf on paper, framed

47 1/4 x 34 1/8 in, 120 x 86.7 cm

(MS20.005)

SOLD





Scar of midnight portal, crystallized to green and black and silver and gold outlines, 2020

Acrylic, spray paint, gold and silver leaf on paper, framed
58 1/4 x 35 7/8 in, 148 x 91.1 cm
(MS20.006)



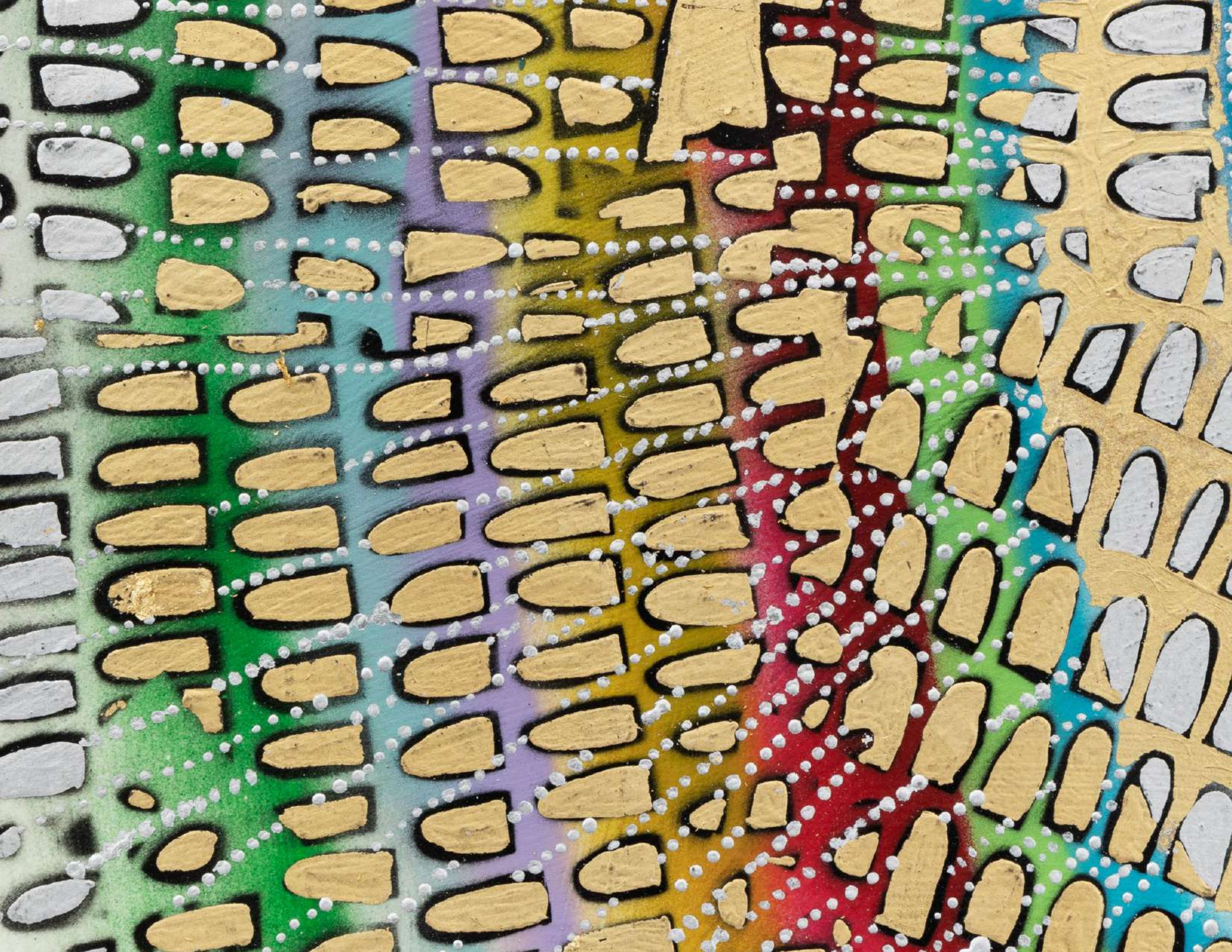


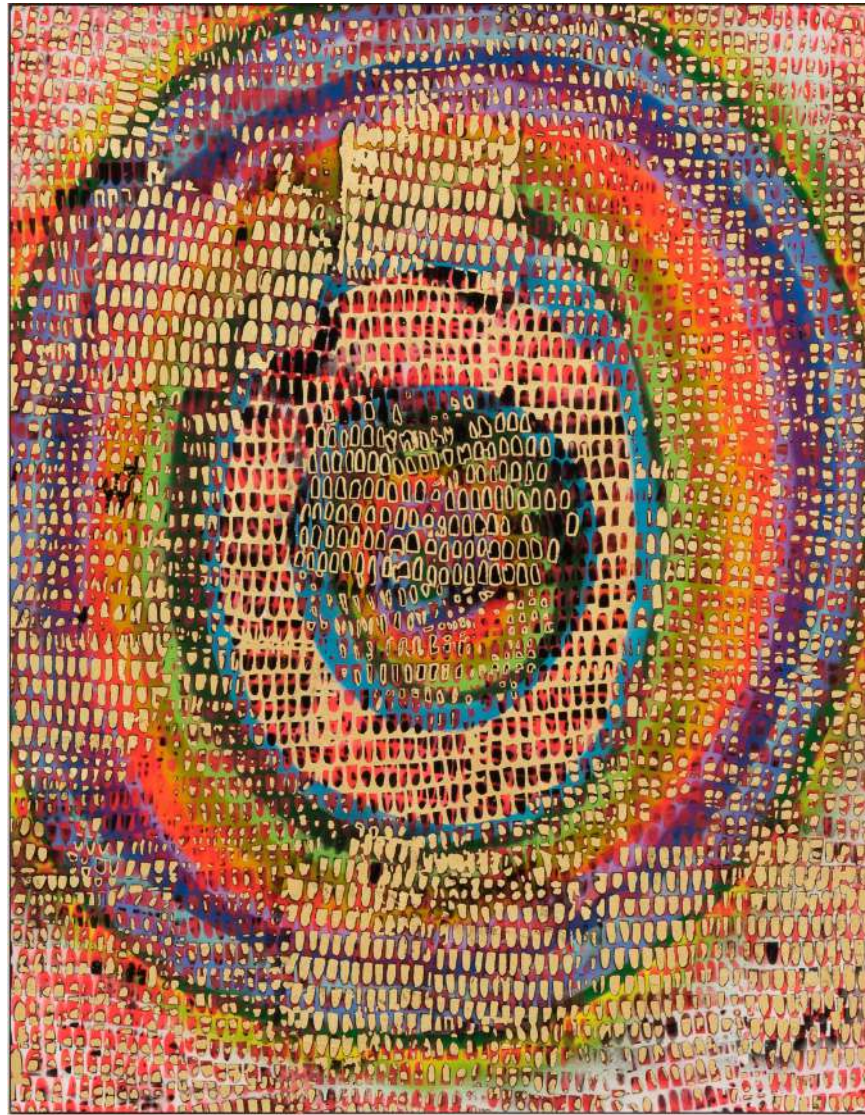


*Scar of midnight portal, crystallized to positive and negative
silver and gold and lines going out, 2020*

Acrylic, spray paint, gold and silver leaf on paper, framed
38 1/4 x 36 1/2 in, 97.2 x 92.7 cm
(MS20.007)







Scar of midnight portal, crystallized to gold negative and positive, 2020

Acrylic, spray paint, gold and silver leaf on paper, framed

48 x 37 1/2 in, 121.9 x 95.3 cm

(MS20.008)

SOLD





Scar of midnight portal, crystallized to silver lines going out and gold solid, 2020

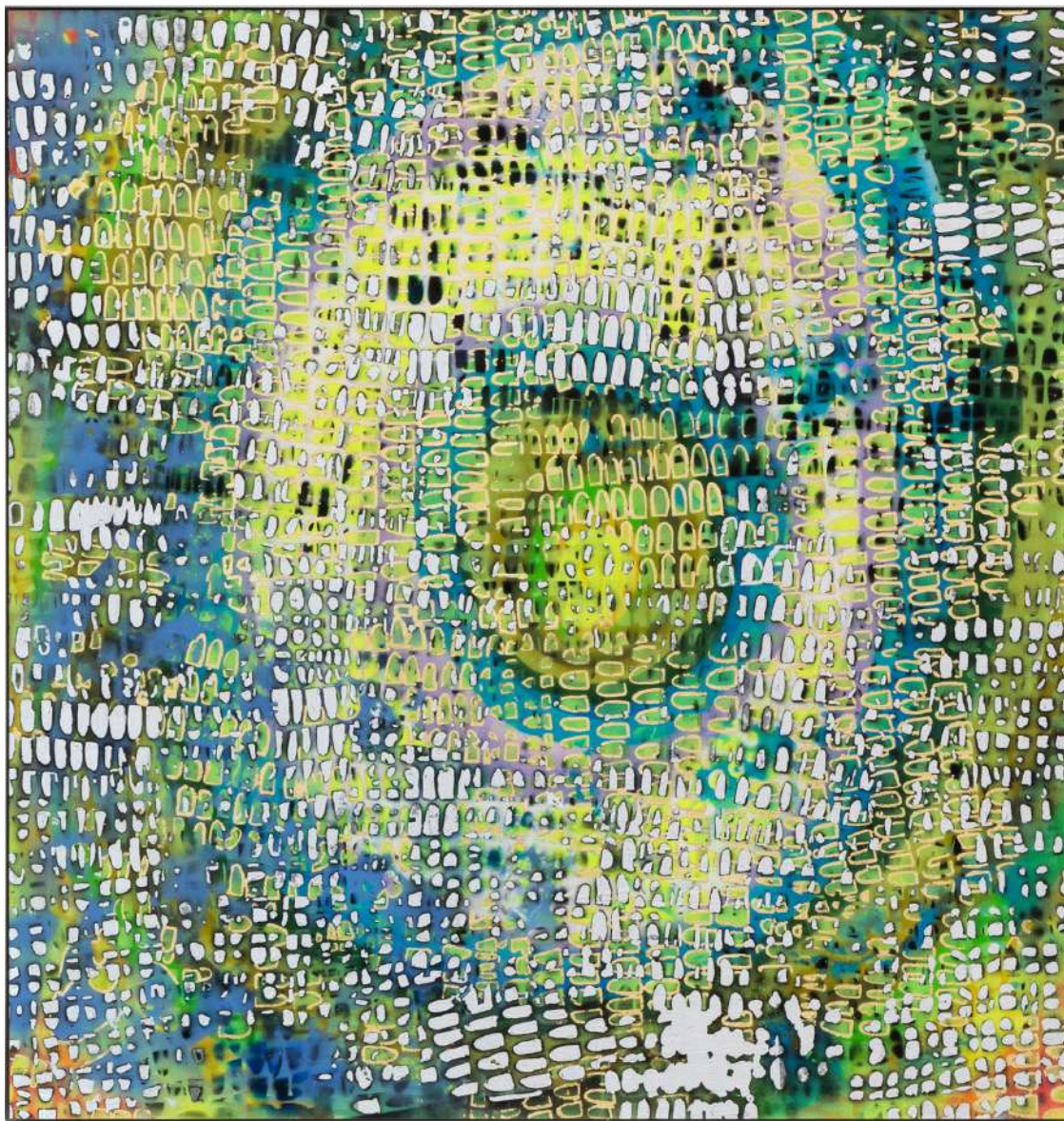
Acrylic, spray paint, gold and silver leaf on paper, framed

36 1/2 x 39 3/4 in, 92.7 x 101 cm

(MS20.009)

SOLD

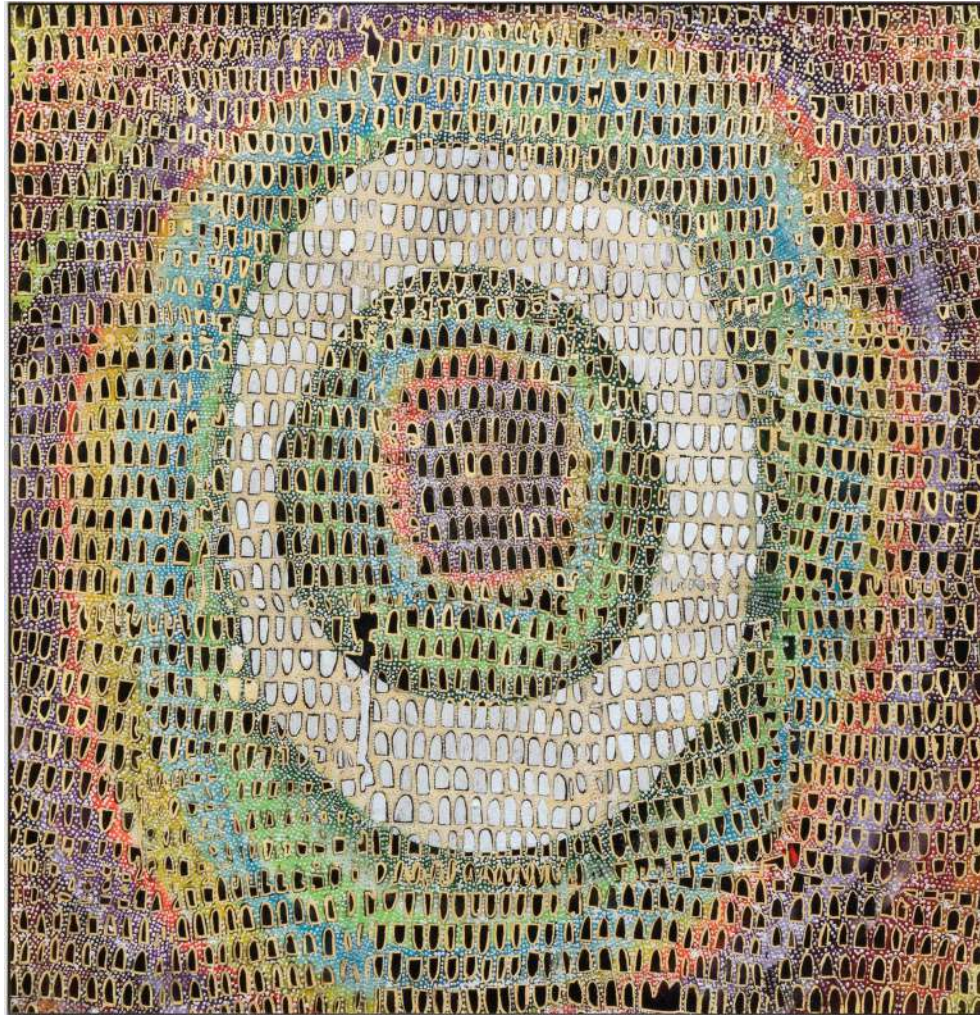




Scar of midnight portal, crystallized to blue, lime, silver and gold, 2020

Acrylic, spray paint, gold and silver leaf on paper, framed
33 1/4 x 31 3/4 in, 84.5 x 80.6 cm
(MS20.010)
SOLD





*Scar of midnight portal, crystallized to splice silver
inside, 2020*

Acrylic, spray paint, gold and silver leaf on paper,
framed

34 1/2 x 33 1/2 in, 87.6 x 85.1 cm

(MS20.011)

SOLD





Scar of midnight portal, crystallized to silver bursting from inside to outside, 2020

Acrylic, spray paint, gold and silver leaf on paper, framed

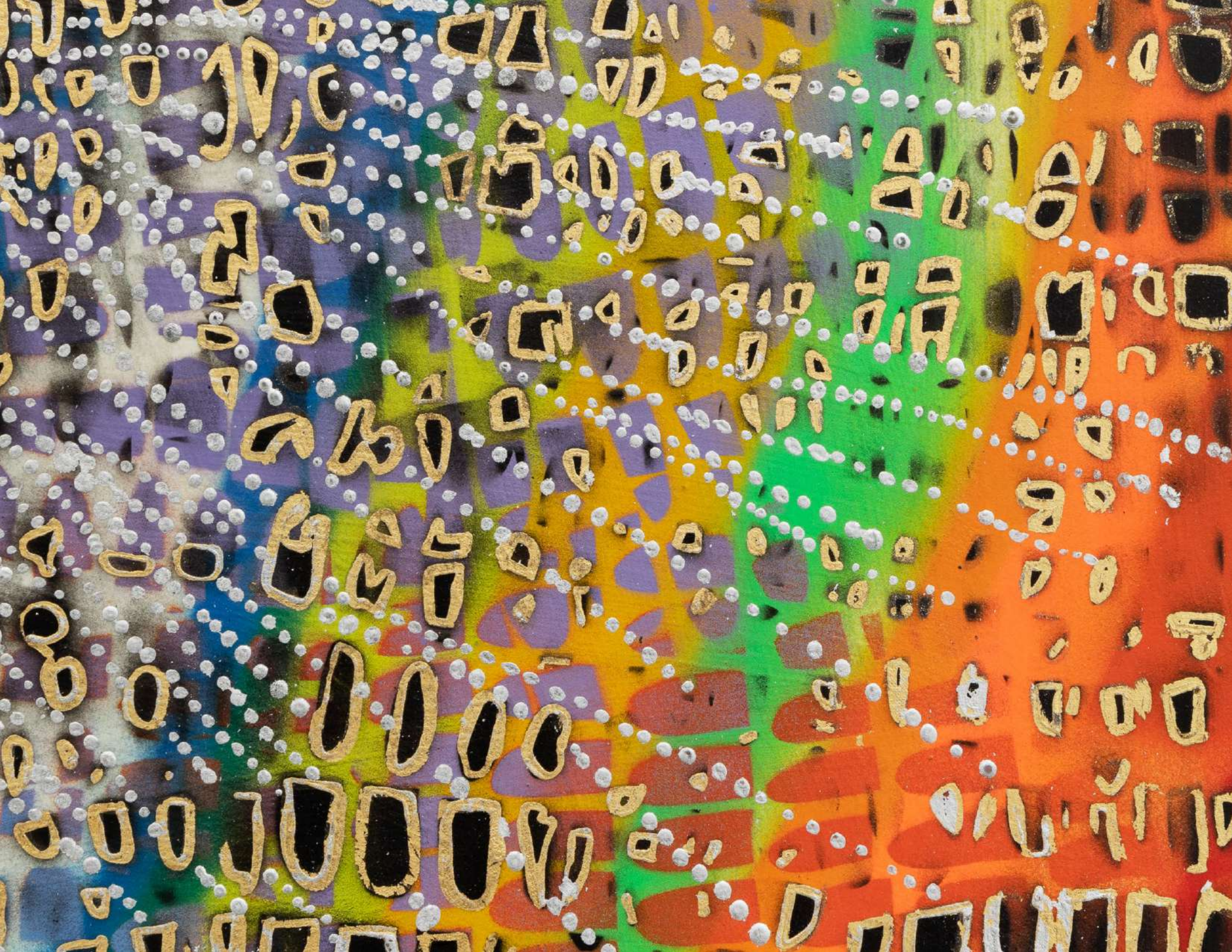
36 x 32 1/4 in, 91.4 x 81.9 cm

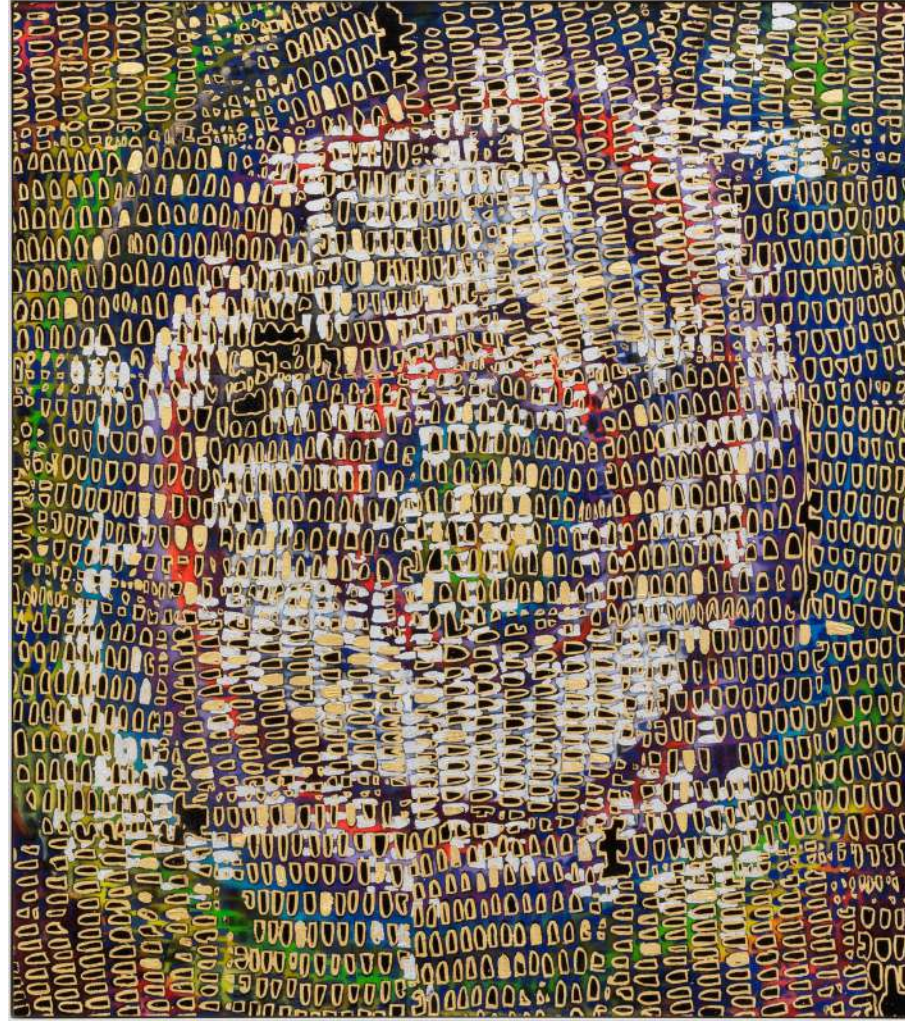
(MS20.012)

\$10,500.00

SOLD







Scar of midnight portal, crystallized to blue, black, silver, and gold, 2020

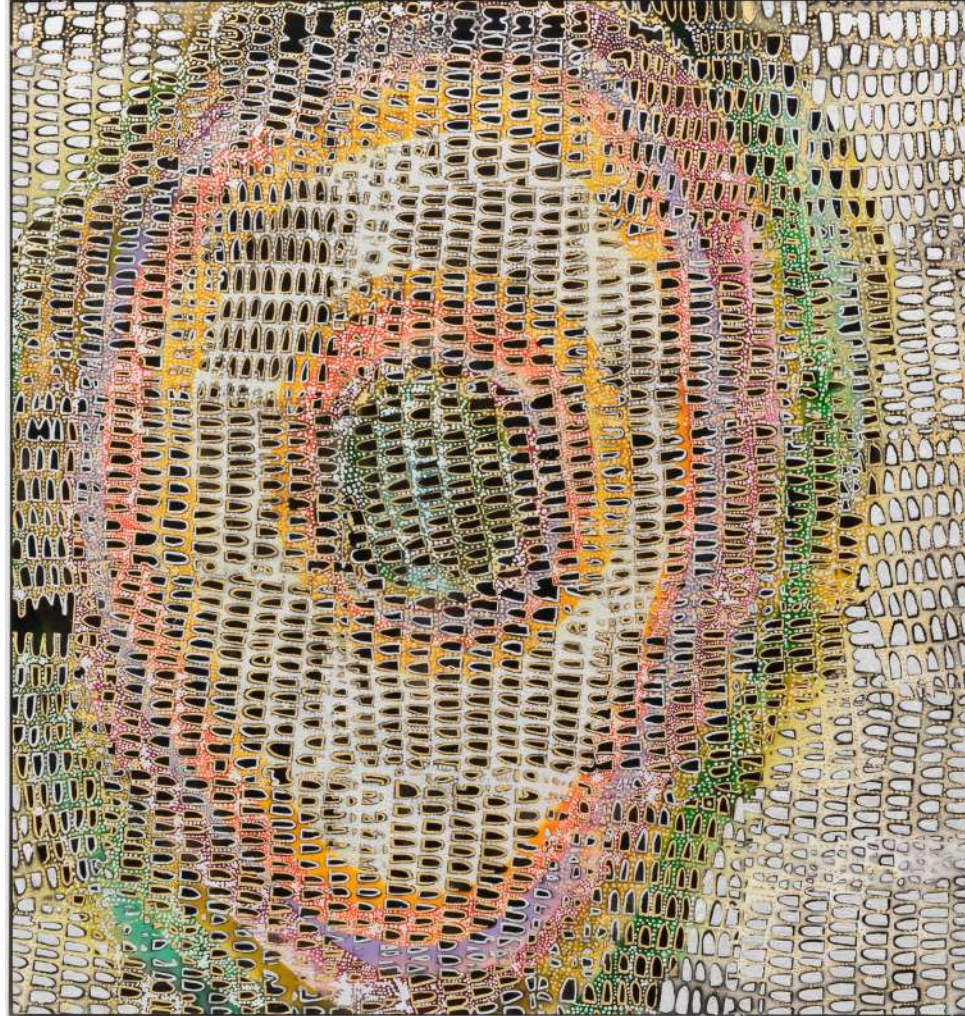
Acrylic, spray paint, gold and silver leaf on paper, framed

37 3/4 x 33 1/2 in, 95.9 x 85.1 cm

(MS20.013)

SOLD





Scar of midnight portal, crystallized to solid silver outside, 2020

Acrylic, spray paint, gold and silver leaf on paper,
framed

37 x 35 in, 94 x 88.9 cm
(MS20.014)





Scar of midnight portal, crystallized to orange, pink, black, and gold, 2020

Acrylic, spray paint, gold and silver leaf on paper, framed

34 1/2 x 32 in, 87.6 x 81.3 cm

(MS20.015)

SOLD

