



NINO MIER
GALLERY

JONATHAN WATERIDGE

INLAND WATER

FEBRUARY 16-MARCH 20, 2021

NINO MIER GALLERY
7277 SANTA MONICA BLVD
LOS ANGELES, CA 90046



JONATHAN WATERIDGE

Inland Water

February 16–March 20, 2021

Nino Mier Gallery is pleased to announce its first solo exhibition with UK-based painter, Jonathan Wateridge. The exhibition, titled *Inland Water*, will be on view in Los Angeles from February 16th to March 20th, 2021.

Inland Water presents a series of Wateridge's recent paintings through which the Zambian-born artist provides a glimpse into private and intimate scenes of poolside affluence visually echoing Wateridge's memories of his suburban upbringing during an era of immense racial and economic inequality in his birth country. While tied to the artist's own history, the imagery escapes the limits of personal narrative and geographic location as Wateridge's cinematic compositions establish a familiar and uncanny atmosphere permeating the façade of comfortable leisure. These painted depictions of exclusionary settings, and the socioeconomic disparity they inevitably suggest, are still equally present decades later in cities all over the world, including Los Angeles, where manmade boundaries such as walls and gates reinforce societal divisions by separating communities of wealth and privilege from members of society who lack the same resources as a result of systemic conditions.

Often confronting the viewer with a direct outward gaze, Wateridge's figures appear disconnected from their serene, seemingly quotidian, spaces as if being confronted by an intrusion into their insular environments, while, in some cases, being further separated from their immediate surroundings by the painterly contours delineating their own form. While each scene contains underpinnings of realism, the tenuous relationship between the subjects and their contrived private spheres points to the highly constructed nature of their existence. In each painting, Wateridge references staged scenes acted out by hired models on full-scale sets fabricated in his studio. The methodically produced foundations of each painting expand on Wateridge's role as a painter as his practice navigates aspects of both filmmaking and photography while allowing his painted narratives to realign with collectively understood aesthetics manufactured by visual media. Since 2019, Wateridge's paintings demonstrate an increasing separation from reality with a decided shift in style from the artist's earlier more realistic renderings. The scenes presented in *Inland Water* exhibit a coalescence of gestural brushstrokes, knife marks, and vivid colors that allow narratives rooted in memory to take on broader associations untethered from the specificity of their source.

Jonathan Wateridge (b. 1972 in Lusaka, Zambia; lives and works in Norfolk, UK) has shown in solo exhibitions at TJ Boulting, London; Galerie Michael Haas, Berlin and Zurich; and Pace Gallery in association with HENI, London. His works have also been included in group exhibitions at Musee de Beaux Arts, Rouen, France; Centre of Contemporary Art, Torun, Poland; Weserburg Museum of Modern Art, Bremen, Germany; and House of Arts, Ostrava, Czech Republic. Wateridge's paintings are in the collections of the Pinault Foundation, Venice; Didier Casimiro, Kiev; the Rennie Museum, Vancouver; as well as the Saatchi Collection, Simmons & Simmons, and the Zabłudowicz Collection, London.



Set of *Enclave*, Jonathan Wateridge, 2016



Installation View of Jonathan Wateridge: *Inland Water* (February 16-March 17, 2021)
Nino Mier Gallery, Los Angeles, CA



Installation View of Jonathan Wateridge: *Inland Water* (February 16-March 17, 2021)
Nino Mier Gallery, Los Angeles, CA



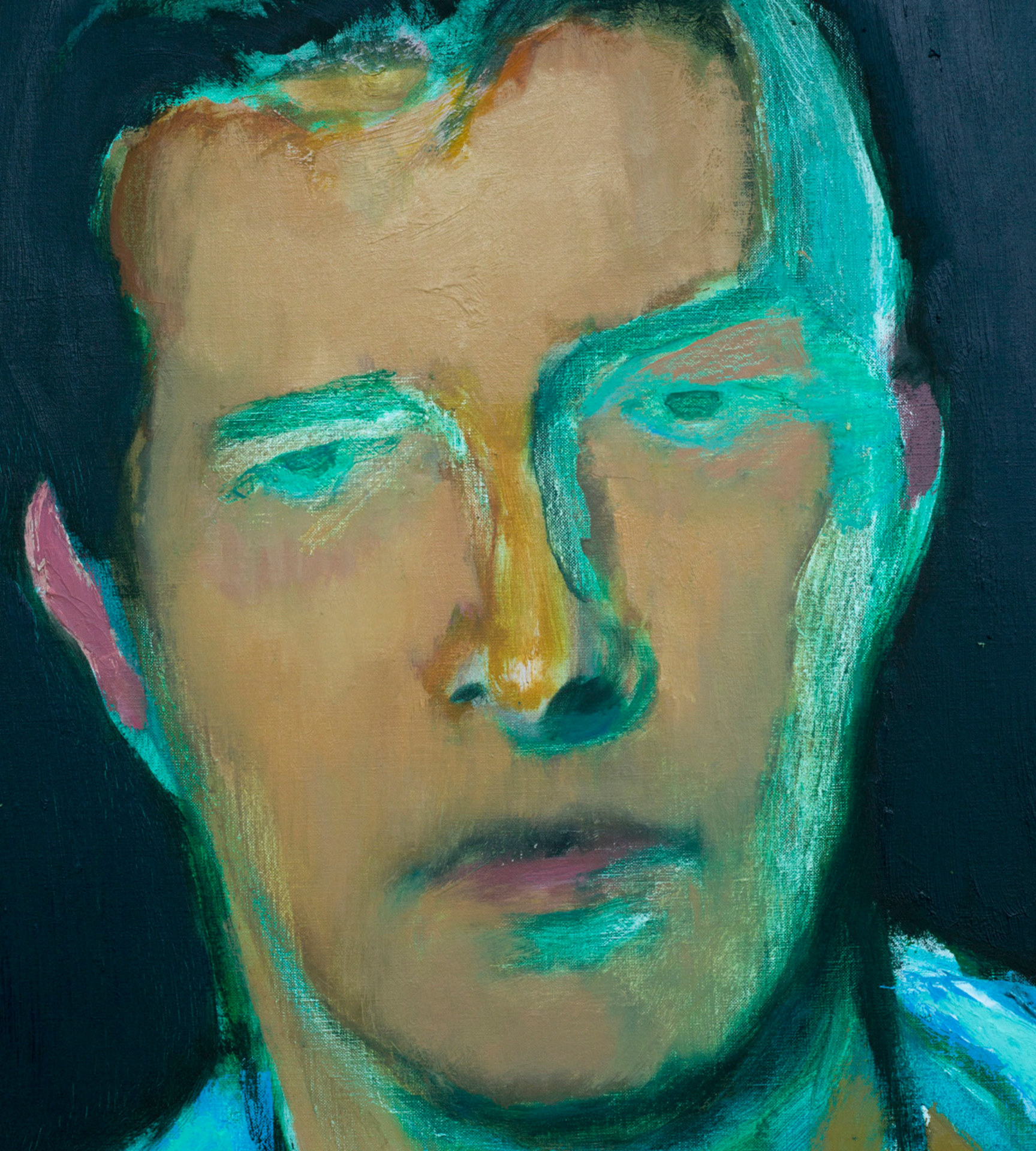
Installation View of Jonathan Wateridge: *Inland Water* (February 16-March 17, 2021)
Nino Mier Gallery, Los Angeles, CA



Installation View of Jonathan Wateridge: *Inland Water* (February 16-March 17, 2021)
Nino Mier Gallery, Los Angeles, CA



Late Swim, 2019
Oil on linen
78 3/4 x 59 1/8 in
200 x 150 cm
(JWA20.012)





Lilo, 2018
Oil on linen
59 1/8 x 157 1/2 in, two parts
150 x 400 cm, two parts
(JWA20.001)



Lilo, 2018
Oil on linen
59 1/8 x 157 1/2 in, two parts
150 x 400 cm, two parts
(JWA20.001)





Back, 2018
Oil on linen
66 7/8 x 47 1/4 in
170 x 120 cm
(JWA20.006)





Patio Men, 2018
Oil on linen
63 x 78 3/4 in, two parts
160 x 200 cm, two parts
(JWA20.005)



Patio Men, 2018
Oil on linen
63 x 78 3/4 in, two parts
160 x 200 cm, two parts
(JWA20.005)





Couple By Wall, 2018
Oil on linen
66 7/8 x 47 1/4 in
170 x 120 cm
(JWA20.004)





Dip, 2019
Oil on linen
88 5/8 x 59 1/8 in.
225 x 150 cm
(JWA20.009)





Installation View of Jonathan Wateridge: *Inland Water* (February 16-March 17, 2021)
Nino Mier Gallery, Los Angeles, CA



Installation View of Jonathan Wateridge: *Inland Water* (February 16-March 17, 2021)
Nino Mier Gallery, Los Angeles, CA



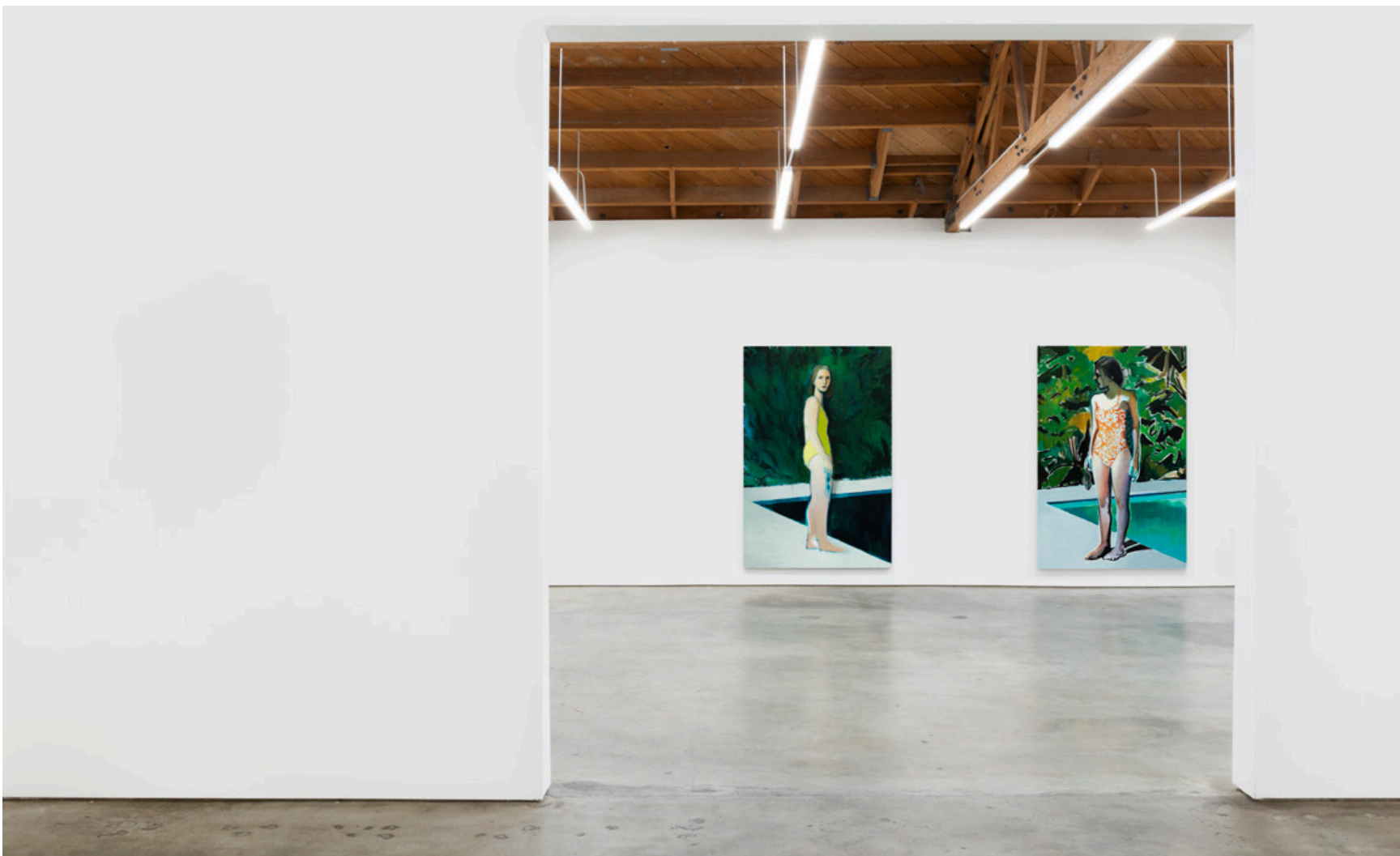
Swimmers Diptych, 2018
Oil on linen
68 7/8 x 78 3/4 in, two parts
175 x 200 cm, two parts
(JWA20.Q02)





Night Lilo, 2018
Oil on linen
68 7/8 x 61 1/8 in
175 x 155 cm
(JWA20.007)





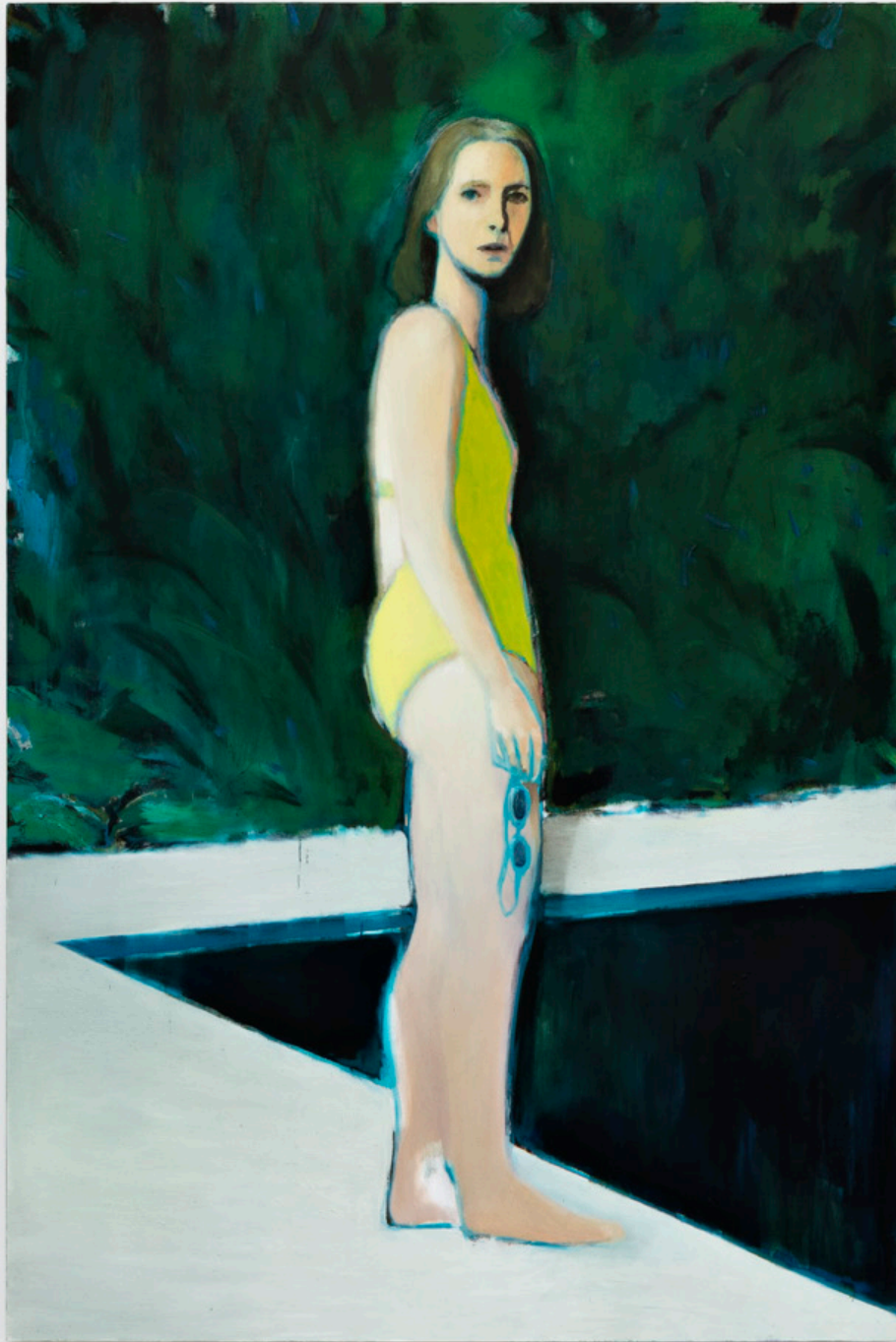
Installation View of Jonathan Wateridge: *Inland Water* (February 16-March 17, 2021)
Nino Mier Gallery, Los Angeles, CA



Installation View of Jonathan Wateridge: *Inland Water* (February 16-March 17, 2021)
Nino Mier Gallery, Los Angeles, CA



Installation View of Jonathan Wateridge: *Inland Water* (February 16-March 17, 2021)
Nino Mier Gallery, Los Angeles, CA



Reflecting Pool, 2020
Oil on linen
88 5/8 x 59 1/8 in
225 x 150 cm
(JWA20.019)





Red Suit, 2019
Oil on linen
88 5/8 x 59 1/8 in
225 x 150 cm
(JWA20.010)





Night Swim, 2019
Oil on linen
78 3/4 x 68 7/8 in
200 x 175 cm
(JWA20.011)





Expatria, 2018
Oil on linen
68 7/8 x 61 1/8 in
175 x 155 cm
(JWA20.003)





JONATHAN WATERIDGE

Born 1972 Lusaka, Zambia
Lives and works in London, UK

SOLO EXHIBITIONS

2021 *Inland Water*, Nino Mier Gallery, Los Angeles, CA, US

2020 *This Side of Paradise*, TJ Boulting, London, UK

2017 *Swimmer*, Galerie Haas, Zurich, CH

2016 *Enclave*, Pace London / HENI, London, UK
Colony, Galerie Michael Haas, Berlin, DE

2014 *Monument*, Wilkinson, London, UK

2013 *Inter + Vista*, L + M Arts, Los Angeles, CA, US

2011 *Mittelland*, All Visual Arts, London, UK

2010 *Another Place*, All Visual Arts, London, UK

2006 *On a Clear Day You Can See Forever*, David Risley Gallery, London, UK

2004 Fordham Gallery, London, UK

GROUP EXHIBITIONS

2019 *So British! 10 Masterpieces from the Pinault Collection*, Esplanade Fine Art Museum
Marcel Duchamp, Rouen, FR

2018 *Painting Still Alive*, Centre of Contemporary Art, Torun, PL

2017 *Disrupted Imagination*, Central Museum, Szentendre, HU
Proof of Life, Weserburg Museum of Art, Bremen, DE
Disrupted Imagination, House of Arts, Ostrava, CZ

2016 *The Good, The Bad & The Ugly*, Charlie Smith, London, UK

2015 *Blow Up*, Parafin Gallery, London, UK



- 2012 *Metamorphosis*, All Visual Arts, The Crypt, One Marylebone, London, UK
- 2012 *Beyond Reality - British Painting Today*, Galerie Rudolfinum, Prague, CZ
- 2011 *The World Belongs to You*, Pinault Foundation, Palazzo Grassi, Venice, IT
- 2010 *Newspeak, British Art Now*, Saatchi Gallery, Gallery of South Australia, Adelaide, AU
- 2010 *Newspeak, British Art Now*, Saatchi Gallery, London, UK
- 2010 *Vanitas; The Transience of Earthly Pleasures*, All Visual Arts, London, UK
- 2009 *Newspeak, British Art Now*, Hermitage Museum, St. Petersburg, RU
- 2009 *The Age of the Marvellous*, All Visual Arts, London, UK
- 2007 *A Song Turning Inwards*, Tatjana Peters/One Twenty, Ghent, BZ
- 2006 *The Stone in Art*, Rove, London, UK
- 2005 *Accidental Death*, David Risley Gallery, London, UK

PUBLICATIONS

- 2017 *Swimmer*, Galerie Haas AG
- 2016 *Colony*, Galerie Haas AG
- 2011 *Mittelland*, All Visual Arts
- 2010 *Another Place*, All Visual Arts

SELECTED COLLECTIONS

Pinault Foundation, Venice, IT
Dider Casimiro, Kiev, UA
Saatchi Collection, London, UK
Rennie Collection, Vancouver, CA
Simmons & Simmons, London, UK
Anita Zabłudowicz Collection, London, UK

