

An abstract painting featuring a large, textured yellow shape on the left side, possibly representing a face or a figure. The background is a mix of white, grey, and blue tones with various colorful brushstrokes in red, green, blue, and pink. The overall style is expressive and gestural.

NINO MIER  
GALLERY

**ANTWAN HORFEE**

*DALLAS ART FAIR*

BOOTH F1

April 21 - 24, 2022

NINO MIER GALLERY  
7277 SANTA MONICA BLVD  
LOS ANGELES, CA 90046



**ANTWAN HORFEE**

DALLAS ART FAIR

April 21 - 24, 2022

For Dallas Art Fair 2022, Nino Mier Gallery presents a suite of works by Paris-based artist Antwan Horfee. Horfee paints in a mode that melds figuration with abstraction, incorporating a particular interest in sci-fi and fantasy aesthetics. Traversing between hazy color fields and airbrushed figuration, Horfee's painterly gestures create narrative guides that bridge visual planes of varying depths and usher spectators into invented alternate realities. The marked distinction delineated by Horfee's contrasting application methods denote the diverse potential for image making and consider the multitude of possibilities for working without technical training. The works endeavor to push amateurism and fuel creative curiosity. Manifested from emotion, the collage-like forms generated through Horfee's action painting reflect layers of aesthetic references including Japanese ukiyo-e, graffiti, comics, and painters spanning art history such as Peter Paul Rubens and Charline von Heyl. Horfee's vivid strokes and graphic undulating forms, palpable reminders of each work's material flatness, are reminders of the power and joy of creation.

*Antwan Horfee (b. 1983 in Paris, FR; lives and works in Paris, FR) studied Beaux-Arts de Paris. Horfee has presented solo exhibitions with Nino Mier Gallery, Los Angeles; Ruttkowski;68 in Paris; PLUS-ONE Gallery, Antwerp; and Palais de Tokyo, Paris. His works have also been included in group exhibitions at the Lyon Biennale of Contemporary Art, Lyon; Galerie Derouillon, Paris; and the Michael Horbach Foundation, Cologne.*



*heavy obstacles*, 2022 | Acrylic on canvas | 78 3/4 x 78 3/4 in, 200 x 200 cm | (HOR22.001)





*The ballad of Narayama*, 2022 | Glazed Ceranmic | (HOR22.029) |







*outdoor we miss you!*, 2022 | Acrylic on canvas | 78 3/4 x 78 3/4 in, 200 x 200 cm | (HOR22.002)









*den is a bridge, go find it*, 2022 | Acrylic on canvas | 78 3/4 x 78 3/4 in, 200 x 200 cm | (HOR22.003)





*Eat my shorts*, 2022 | Glazed Ceranmic | Various Dimensions | (HOR22.026)





*micro culture re/set/search*, 2022 | Acrylic on canvas | 68 7/8 x 51 1/8 in, 175 x 130 cm | (HOR22.005)







*language parade*, 2022 Acrylic on canvas 78 3/4 x 118 1/8 in 200 x 300 cm | (HOR22.006)







*a village in the snow can shine*, 2022 | Acrylic on canvas | 68 7/8 x 51 1/8 in, 175 x 130 cm | (HOR22.008)





*Ice cube will save you!*, 2022 | Glazed Ceramic | Various Dimensions | (HOR22.025)





*cosmopurps*, 2022 | Acrylic on canvas | 78 3/4 x 78 3/4 in, 200 x 200 cm | (HOR22.015)







*even dream islands got grey zones*, 2022 | Acrylic on canvas | 51 1/8 x 68 7/8 in, 130 x 175 cm | (HOR22.016)





*a stack of horizons for a child*, 2022 | Acrylic on canvas | 68 7/8 x 51 1/8 in, 175 x 130 cm | (HOR22.017)





*Picsou's most relevant tool*, 2022 | Glazed Ceranmic | Various Dimensions | (HOR22.030)





*golden coffee addict*, 2022 | Acrylic on canvas | 78 3/4 x 78 3/4 in, 200 x 200 cm | (HOR22.018) |









*Frozen's trash*, 2022 | Glazed Ceranmic | Various Dimensions | (HOR22.027)





*splatter house-ish (up side down)*, 2022 | Acrylic on canvas | 78 3/4 x 78 3/4 in, 200 x 200 cm | (HOR22.019)





*Traces of introspection*, 2022 | Glazed Ceramic | Various Dimensions | (HOR22.028)







*that sweat manège de nuit*, 2022 | Acrylic on canvas | 78 3/4 x 78 3/4 in, 200 x 200 cm | (HOR22.020)





*battle-toads battle-maniacs*, 2022 | Acrylic on canvas | 68 7/8 x 51 1/8 in, 175 x 130 cm | (HOR22.021)







*Escorte us to nung river*, 2022 | Glazed Ceranmic | Various Dimensions | (HOR22.024)



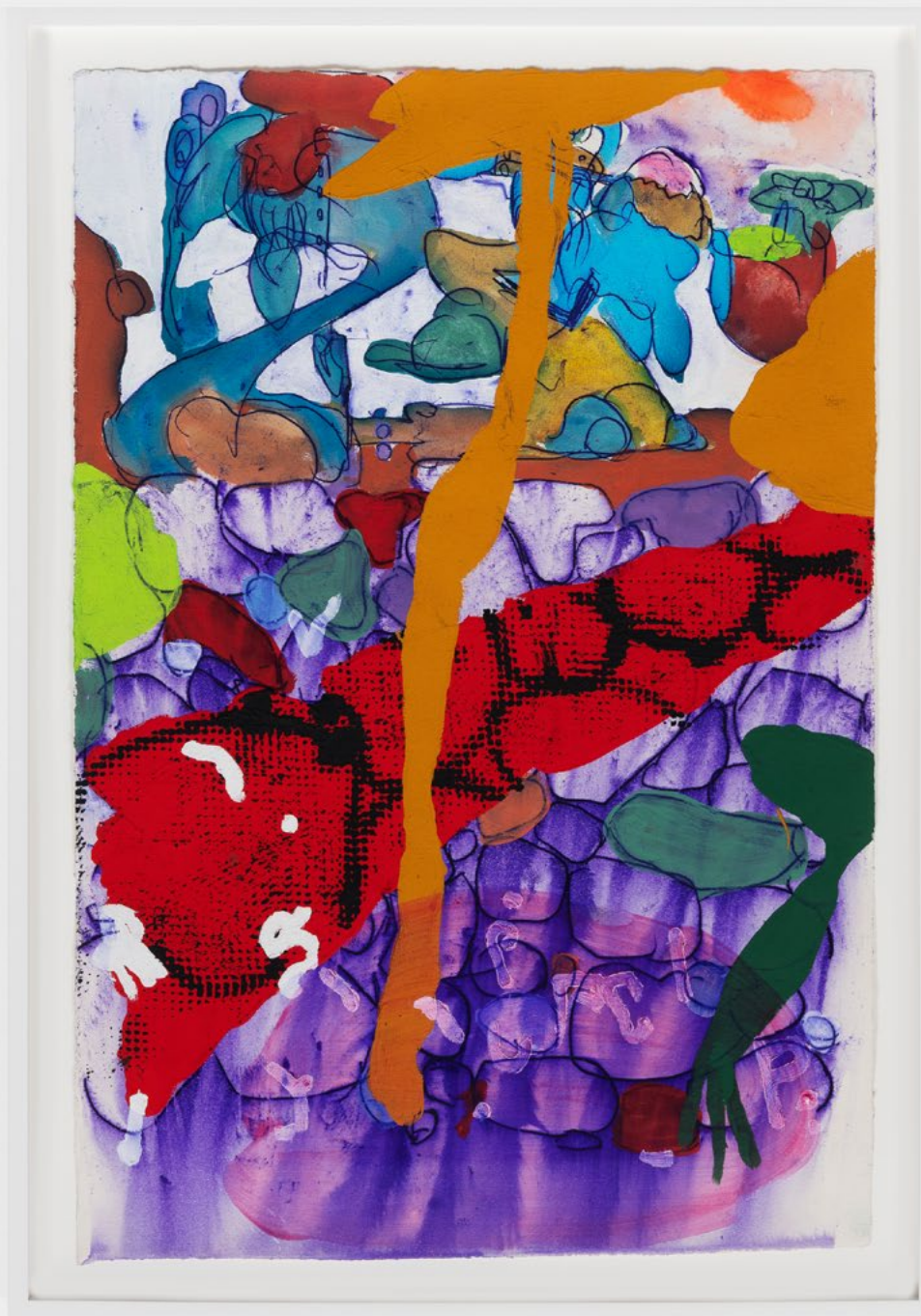


*crunch the branches it's hot*, 2022 | Acrylic on canvas | 68 7/8 x 51 1/8 in, 175 x 130 cm | (HOR22.022)





WORKS ON PAPER



*Mature nature*, 2022 | Acrylic and ink on 300g paper | 23 5/8 x 15 3/4 in, 60 x 40 cm | (HOR22.013)





*Inside the vacuum*, 2022 | Acrylic and ink on 300g paper | 23 5/8 x 15 3/4 in, 60 x 40 cm | (HOR22.012)





*Everyone is waiting for a stack of something*, 2022 | Acrylic and ink on 300g paper | 23 5/8 x 15 3/4 in, 60 x 40 cm  
(HOR22.014)







*Mature nature*, 2022 | Acrylic and ink on 300g paper | 23 5/8 x 15 3/4 in, 60 x 40 cm | (HOR22.013)





*Micro cochmuck*, 2022 | Acrylic and ink on 300g paper | 23 5/8 x 15 3/4 in, 60 x 40 cm | (HOR22.010)





## **ANTWAN HORFEE**

Born in 1983 in Paris, FR Lives and works in Paris, FR

### **EDUCATION**

2011 Ecole Nationale Supérieure des Beaux-Arts, Paris, FR

### **SOLO EXHIBITIONS**

2021 *SCI-FRIED*, Nino Mier, Los Angeles, CA, US

2020 GOONSI, Ruttkowski;68, Paris, FR

2019 I'm the glue, PLUS-ONE Gallery, Antwerp, BE Gigamaku, Palais De Tokyo, Paris, FR

2019 Art on Paper, PLUS-ONE Gallery, Brussels, BE

2017 Piggy Catastrophe, GSB gallery, Stockholm, SE Sorry Bro, Ruttkowski;68, Cologne, DE Fantasma1, Naruyama Gallery, Tokyo, JP

2015 Traditional Occupations, Ruttkowski;68, Cologne, DE 2014 Chaos Pays, New Image Art Gallery, Los Angeles, CA, US 2013 Antwan Horfee's Imaginarium, London, UK

### **GROUP EXHIBITIONS**

2020 Blast over, Ruttkowski;68 Paris, FR  
Echo Chamber, PLUS-ONE Gallery, Antwerp, BE  
Mixed Pickles 8, curated by Ruttkowski;68, Wilhelm Hallen, Berlin, DE

2019 Biennale de Lyon, Musée des Beaux-Arts, FR  
Looking at the world through rose coloured, Plus-One Gallery, Art Brussels, BE

2018 Looking at the world through rose coloured, Plus-One Gallery, Art Rotterdam, NL L'esprit souterrain, curated by Hugo Vitrani, Experience POMMERY #14, Reims, FR

2017 A quoi sert d'être lion en cage, curated by Hugo Vitrani, Galerie Derouillon, Paris, FR Post-Insulte, Paris, FR  
Printer Matter, Salon MAD, La Maison Rouge, Paris, FR Casse et Vole, Paris, FR  
Dallas Art Fair, Ruttkowski;68, Dallas, TX, US



2016 Vertical I, curated by Ruttkowski;68, Michael Horbach Foundation, Cologne, DE Bricks and Clicks #2, curated by Le Chassis, Galerie Christophe Gaillard, Paris, FR Tokyo Art Fair, Naruyama Gallery, JP

Tokyo,

Jour les Tours, duo with Lo hishash Saeio, curated by Antwan Horfee, Espace des arts sans Frontières, Paris, FR

2014 Biolensu, with Ken Sortais, Palais De Tokyo, Paris, FR

2013 Pataganne, Sunset Residence, Lyon, FR Palingenesis, Klughaus Gallery, New York, NY, US Old Boot, Galleries Goldstein, London, UK Future/Memory, Hellerau Center of Art, Dresden, DE

2012 Stuck On The City, National City Gallery of Prague, Prague, CZ

2011 Street Smart, Kulturhuset, Stockholm, SE

## **RESIDENCIES**

2016 Residency at Somerset House, London, UK

