

The logo for Nino Mier Gallery is a circular emblem. The words "NINO MIER" are written in a white, sans-serif font along the top inner edge of the circle, and "GALLERY" is written along the bottom inner edge. The background of the logo is dark and textured, matching the overall aesthetic of the poster.

NINO MIER
GALLERY

JONATHAN WATERIDGE

Aftersun

APRIL 26 - JUNE 18, 2022

PAINTINGS ON PAPER

NINO MIER GALLERY BRUSSELS
RUE ERNEST ALLARD 25 ERNEST ALLARDSTRAAT
1000 BRUSSELS
BRUSSELS@MIERGALLERY.COM



Time in the Water Study, 2021 | Oil on Paper | 8 5/8 x 7 1/8 in, 22 x 18 cm | (JWA22.054)





Time in the Water Study, 2021 | Oil on Paper | 8 5/8 x 7 1/8 in, 22 x 18 cm | (JWA22.054)





Swimmer Reflected, 2022 | Oil on Paper | 8 5/8 x 6 1/4 in, 22 x 16 cm | (JWA22.055)





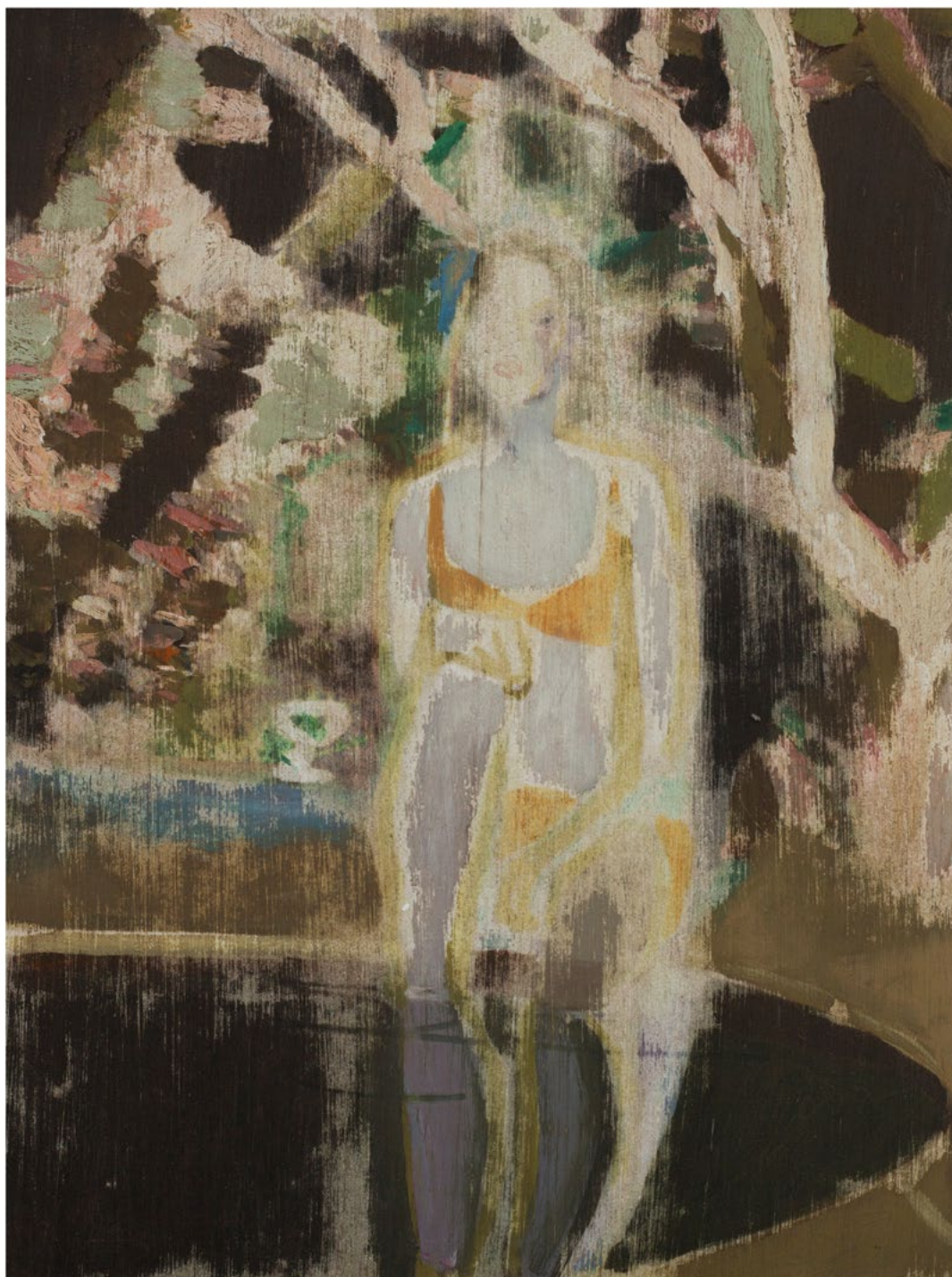
Roman End, 2022 | Oil on Paper | 10 5/8 x 7 1/8 in | 27 x 18 cm | (JWA22.057)





Figure on a Lounger, 2022 | Oil on Paper | 8 1/4 x 9 1/2 in, 21 x 24 cm | (JWA22.060)





Two Weeks in Every Year, 2022 | Oil on Paper | 8 5/8 x 6 1/4 in, 22 x 16 cm | (JWA22.062)



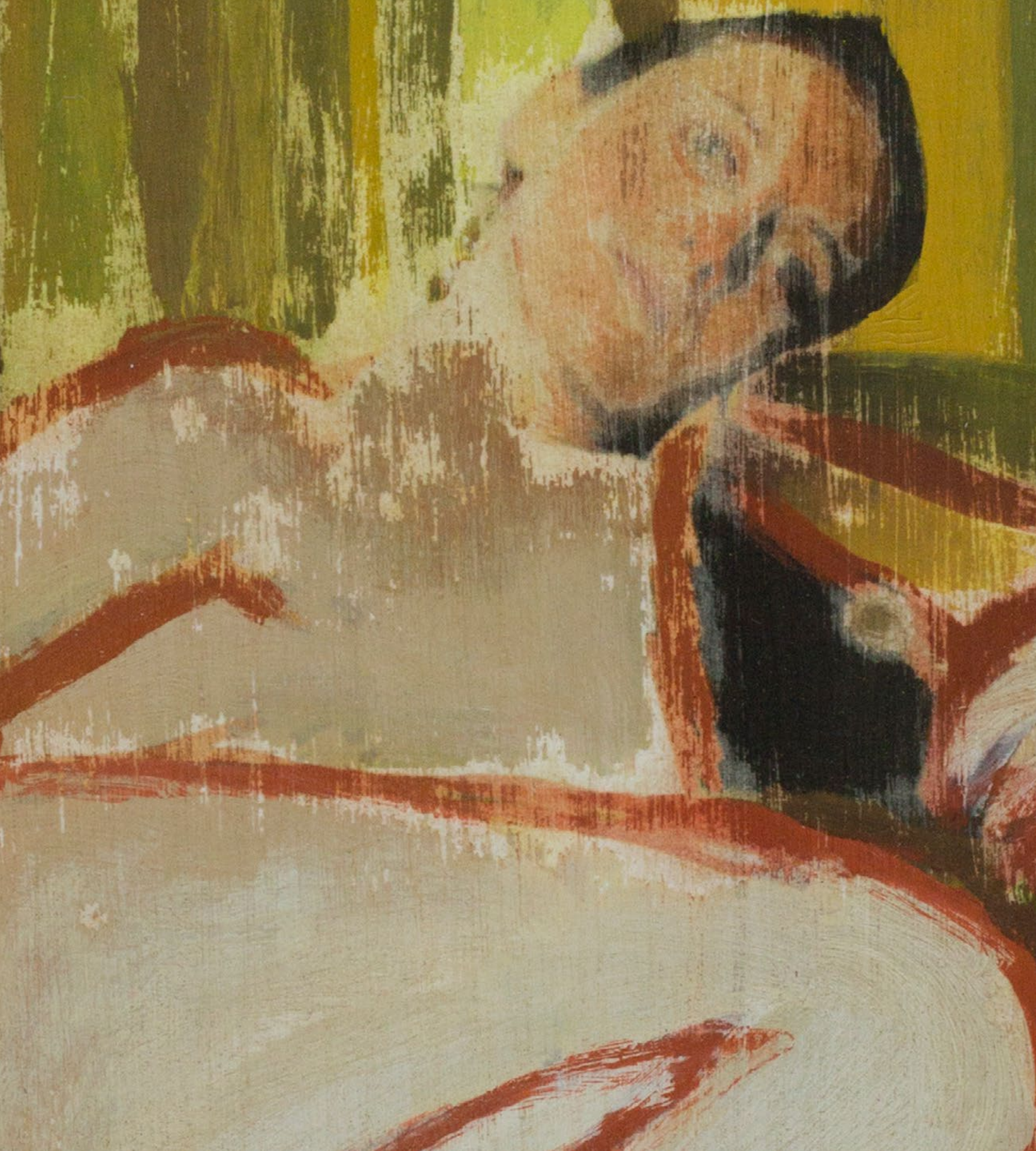


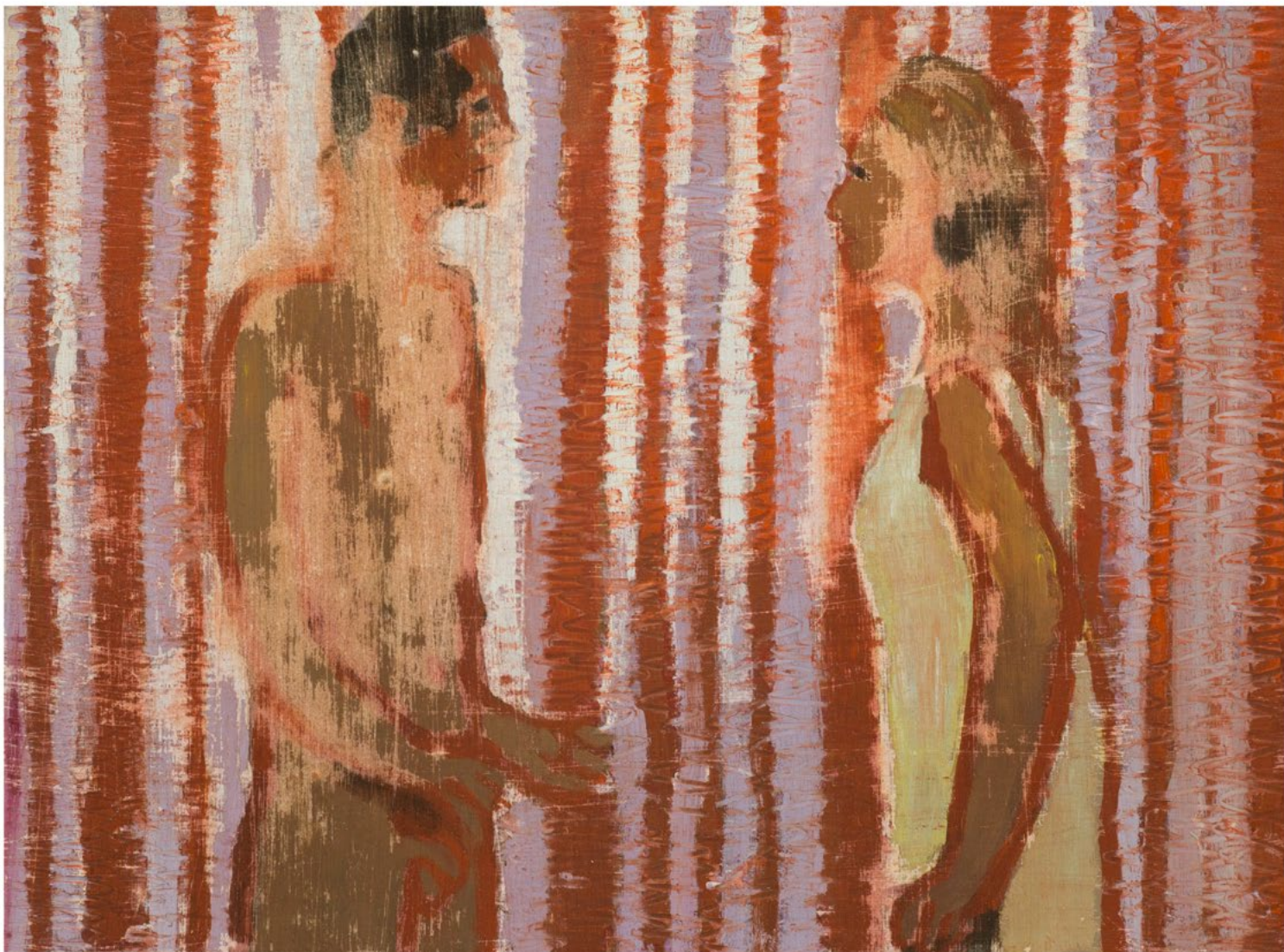
Halflight, 2022 | Oil on Paper | 13 3/4 x 9 1/2 in, 35 x 24 cm | (JWA22.067)





Yellow Curtain, 2022 | Oil on Paper | 9 7/8 x 7 1/2 in, 25 x 19 cm | (JWA22.068)





Red Curtain, 2022 | Oil on Paper | 7 1/2 x 9 7/8 in, 19 x 25 cm | (JWA22.069)





Two Figures, 2022 | Oil on Paper | 9 1/2 x 6 3/4 in, 24 x 17 cm | (JWA22.078)





Figure in a Room (seated), 2022 | Oil on Paper | 8 1/4 x 6 1/4 in, 21 x 16 cm | (JWA22.070)





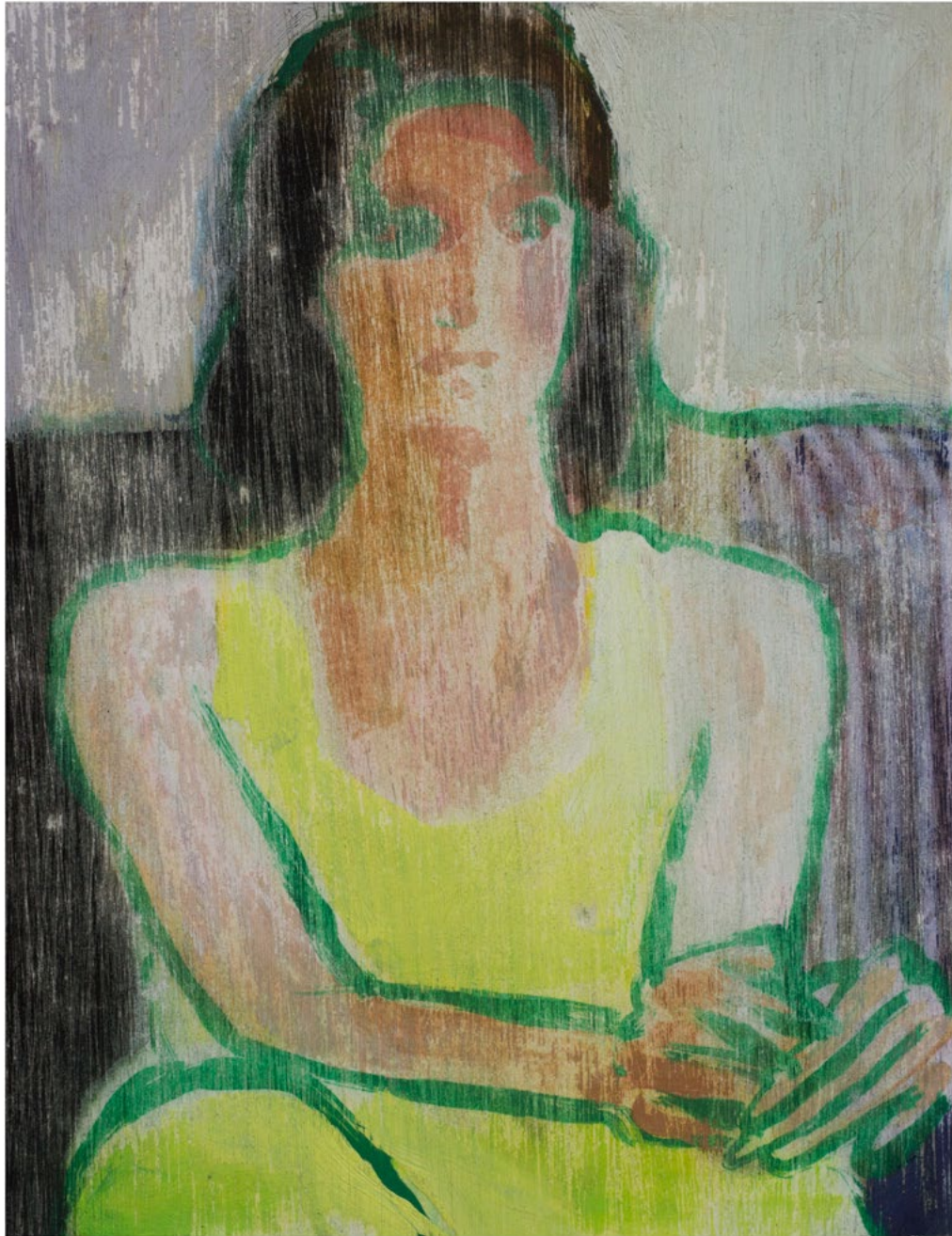
Lamplight, 2022 | Oil on Paper | 9 1/8 x 6 3/4 in, 23 x 17 cm | (JWA22.071)





Figure Rising, 2022 | Oil on Paper | 7 7/8 x 5 7/8 in, 20 x 15 cm | (JWA22.073)





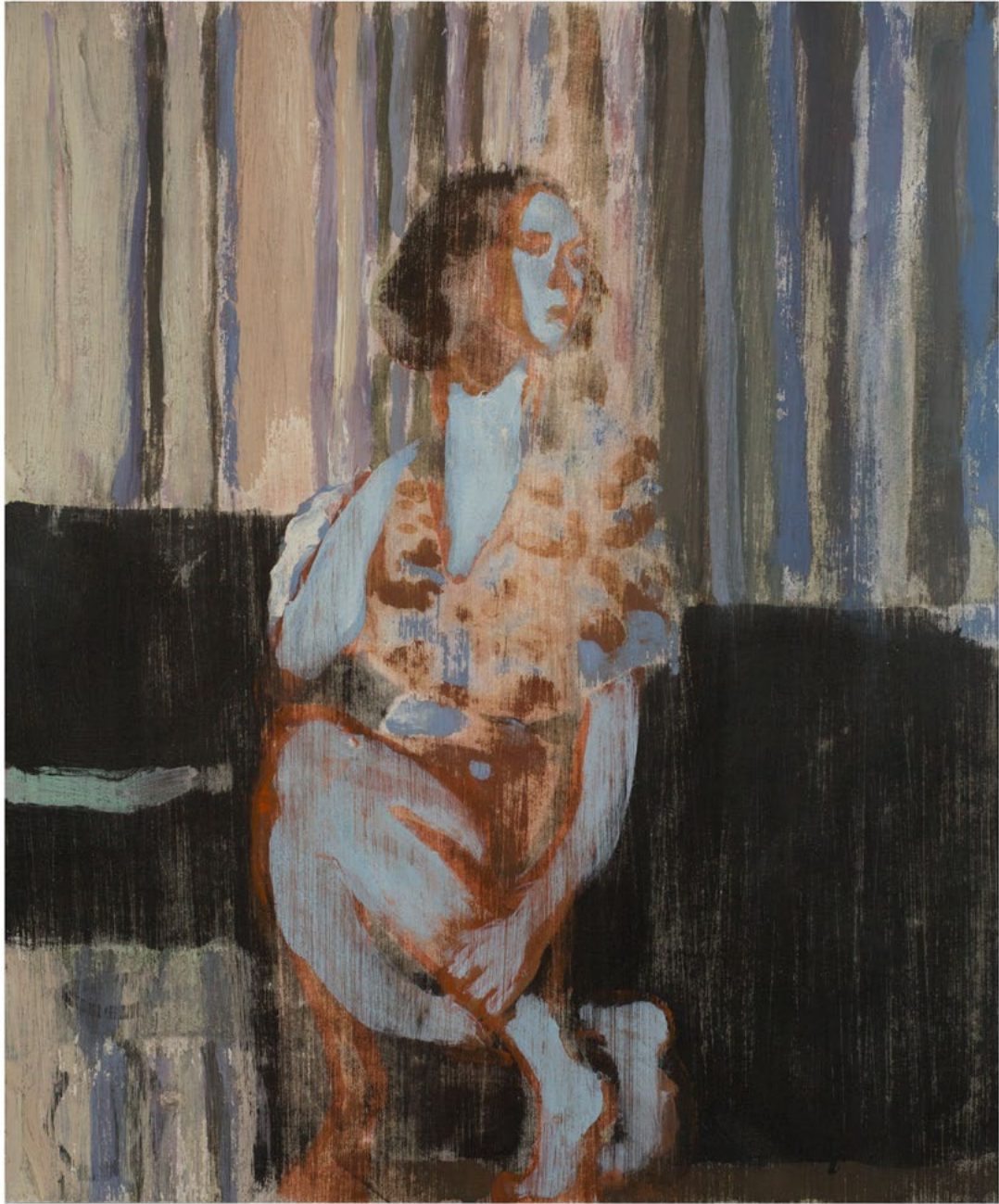
Woman in Yellow, 2022 | Oil on Paper | 19 x 15 cm | (JWA22.076)





Sleepers, 2022 | Oil on Paper | 7 1/2 x 10 5/8 in, 19 x 27 cm | (JWA22.079)





Glass Table, 2022 | Oil on Paper | 9 7/8 x 8 1/4 in, 25 x 21 cm | (JWA22.083)





Figure on Sofa, 2022 | Oil on Paper | 4 x 7 1/8 in, 10 x 18 cm | (JWA22.088)





Figure with Flowers , 2022 | Oil on Paper | 11 1/8 x 7 7/8 in, 28 x 20 cm | (JWA22.082)





Sleepers (Afternoon), 2022 | Oil on Paper | 6 3/4 x 10 1/4 in ,17 x 26 cm | (JWA22.081)





Red Couch, 2022 | Oil on Paper | 20 x 26 cm | (JWA22.085)





Seated Figure, 2022 | Oil on Paper | 5 7/8 x 5 7/8 in, 15 x 15 cm | (JWA22.087)





White Room, 2022 | Oil on Paper | 9 1/2 x 12 5/8 in, 24 x 32 cm | (JWA22.086)





Two Figures by a Pool, 2022 | Oil on Paper | 7 1/8 x 10 5/8 in, 18 x 27 cm | (JWA22.064)





Sunbather in Shade, 2022 | Oil on Paper | 8 1/4 x 11 3/4 in, 21 x 30 cm | (JWA22.061)



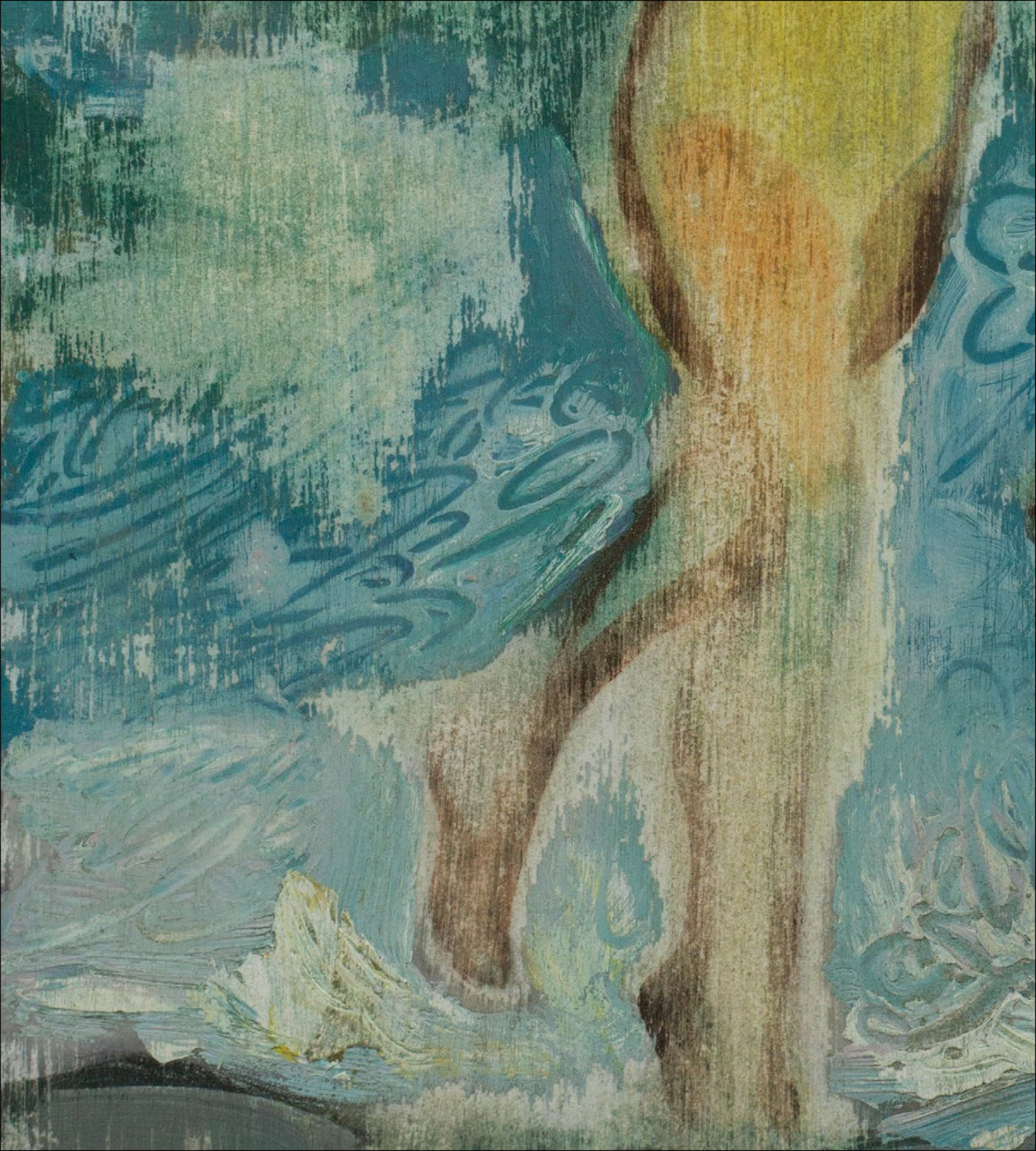


White Figure Reflected Study, 2022 | Oil on Paper | 8 5/8 x 6 3/4 in, 22 x 17 cm | (JWA22.056)





Catch, 2022 | Oil on Paper | 9 1/8 x 7 1/8 in, 23 x 18 cm | (JWA22.065)





Reclining Swimmer, 2021 | Oil on Paper | 7 1/8 x 11 1/8 in, 18 x 28 cm | (JWA22.058)





Red Head, 2022 | Oil on Paper | 4 3/8 x 4 3/8 in, 11 x 11 cm | (JWA22.084)





Seated Figure, 2022 | Oil on Paper | 6 1/4 x 4 3/4 in, 16 x 12 cm | (JWA22.089)





Figure in Pool, 2022 | Oil on Paper | 11 3/4 x 7 7/8 in, 30 x 20 cm | (JWA22.052)





JONATHAN WATERIDGE

Born 1972 Lusaka, Zambia
Lives and works in London, UK

SOLO EXHIBITIONS

- 2022 *Aftersun*, Nino Mier Gallery Brussels, BE
- 2021 *Inland Water*, Nino Mier Gallery, Los Angeles, CA, US
- 2020 *This Side of Paradise*, TJ Boulting, London, UK
- 2017 *Swimmer*, Galerie Haas, Zurich, CH
- 2016 *Enclave*, Pace London / HENI, London, UK
Colony, Galerie Michael Haas, Berlin, DE
- 2014 *Monument*, Wilkinson, London, UK
- 2013 *Inter + Vista*, L + M Arts, Los Angeles, CA, US
- 2011 *Mittelland*, All Visual Arts, London, UK
- 2010 *Another Place*, All Visual Arts, London, UK
- 2006 *On a Clear Day You Can See Forever*, David Risley Gallery, London, UK
- 2004 Fordham Gallery, London, UK

GROUP EXHIBITIONS

- 2021 *Mixing It Up: Painting Today*, Hayward Gallery, London, UK
- 2019 *So British! 10 Masterpieces from the Pinault Collection*, Esplanade Fine Art Museum
Marcel Duchamp, Rouen, FR
- 2018 *Painting Still Alive*, Centre of Contemporary Art, Torun, PL
- 2017 *Disrupted Imagination*, Central Museum, Szentendre, HU
Proof of Life, Weserburg Museum of Art, Bremen, DE
Disrupted Imagination, House of Arts, Ostrava, CZ



- 2016 *The Good, The Bad & The Ugly*, Charlie Smith, London, UK
- 2015 *Blow Up*, Parafin Gallery, London, UK
- 2012 *Metamorphosis*, All Visual Arts, The Crypt, One Marylebone, London, UK
- 2012 *Beyond Reality - British Painting Today*, Galerie Rudolfinum, Prague, CZ
- 2011 *The World Belongs to You*, Pinault Foundation, Palazzo Grassi, Venice, IT
- 2010 *Newspeak, British Art Now*, Saatchi Gallery, Gallery of South Australia, Adelaide, AU
- 2010 *Newspeak, British Art Now*, Saatchi Gallery, London, UK
- 2010 *Vanitas; The Transience of Earthly Pleasures*, All Visual Arts, London, UK
- 2009 *Newspeak, British Art Now*, Hermitage Museum, St. Petersburg, RU
- 2009 *The Age of the Marvellous*, All Visual Arts, London, UK
- 2007 *A Song Turning Inwards*, Tatjana Peters/One Twenty, Ghent, BZ
- 2006 *The Stone in Art*, Rove, London, UK
- 2005 *Accidental Death*, David Risley Gallery, London, UK

PUBLICATIONS

- 2017 *Swimmer*, Galerie Haas AG
- 2016 *Colony*, Galerie Haas AG
- 2011 *Mittelland*, All Visual Arts
- 2010 *Another Place*, All Visual Arts

SELECTED COLLECTIONS

Pinault Foundation, Venice, IT
Dider Casimiro, Kiev, UA
Saatchi Collection, London, UK
Rennie Collection, Vancouver, CA
Simmons & Simmons, London, UK
Anita Zabłudowicz Collection, London, UK

