

NINO MIER
GALLERY

LOLA MONTES

Faccia d'angelo

Every angel has another face

JULY 16 - AUGUST 27, 2022



NINO MIER GALLERY | GLASSELL PARK
2700 W. AVENUE 34
LOS ANGELES, CA 90065
INFO@MIERGALLERY.COM

LOLA MONTES

Faccia d'angelo

Every angel has another face

July 16 - August 27, 2022

Nino Mier Gallery is thrilled to present *Faccia d'angelo / Every angel has another face*, an exhibition by New York-born and Sicily-based artist Lola Montes. The exhibition comprises hand-painted ceramic tiles, reliefs, sculptural vessels and candelabra, and will be on view at our Glassell Park gallery from July 16 – August 27, 2022.

The exhibition's title, *Faccia d'angelo / Every angel has another face*, refers to an Italian idiom deployed with playful irony to deem someone as hiding something more duplicitous under a grace face. Angels abound in Montes' work, from her paintings to her candelabra. *Ascending Souls*, for instance, is a six-tile painted ceramic composition that depicts a series of elongated figures rising up to the heavens with a chromatic expressionism reminiscent of late El Greco. Her fascination with the supernatural world is evoked through her fast, fluid brushwork that suggests spectrality, as though Montes catches her figures in a magical, rare moment of visibility. In her *Angel projections* series, Montes constructs egg-shaped vessels with cutouts of angels on their sides. When a candle is placed in the center of the ceramic, the angels, carved in various postures mid-jump, dance across the walls. They flicker and flow in a manner paralleled by the swirling blue painted on the ceramic's surface—until the candle is out, at least. These elusive, impish, and fleeting angels reveal the “other faces” of Montes' ascending souls.

Angelic icons in *Faccia d'angelo / Every angel has another face* become visual noise in Montes' more talismanic ceramic paintings. *Spell*, for instance, comprises eight ceramic tiles arranged in rows of two. Each relief tile contains both an impastoed composition and a carved, roving line that engulfs it. Some compositions depict standing figures, while others are abstracted, replacing the figure with a body of thickly-applied paint. *Spell*, like Montes' other ceramic reliefs, recalls Lucio Fontana's materialist reappraisal of Italian Gothic painting of the 1950s and '60s, a key touchpoint for the artist.

The prominence of ceramic in *Faccia d'angelo / Every angel has another face* marks a turn in Montes' practice, which previously centered on watercolor and oil painting, and film and video. “Painting on tiles feels like a natural extension of my watercolors,” says the artist. “Even though it's a hard surface, there is a liquid element when drawing on the tiles that feel very similar to drawing on painting with watercolors.”

Materials and materiality are critical features of the artist's practice. Montes works in a foundry to create her own tiles, and prefers to work outdoors, where the natural world's incursions and inspirations can inform her work. Invested in harnessing the creative power of natural materials, Montes is also drawn to the element of improvisation and chance while sculpting ceramics. She describes the firing process as alchemical: it is esoteric and transformative, meaning that her materials undergo the very transmutations that her angels do. As Montes has stated, “The tiles have a physicality, a body that as an object is unique.”

Lola Montes (b. 1981, New York, NY; lives and works in Sicily, IT) received a BFA from The Cooper Union School in 2008. She has exhibited at Muse Gallery, Samedan, CH; Goodroom, Munich, DE; Mana Contemporary, Jersey City, NJ, US; Zuecca Projects, Venice, IT; Ileana Tounta Contemporary Art Center, Athens, Greece; and the Ludwig Museum, Koblenz, DE; among many others. In addition to her painting and sculpture practice, Montes is a filmmaker, editor, and sound designer.



Installation view of Lola Montes, *Faccia d'angelo, Every angel has another face*
Nino Mier Gallery, Glassell Park (July 16 - August 27, 2022)



Installation view of Lola Montes, *Faccia d'angelo, Every angel has another face*
Nino Mier Gallery, Glassell Park (July 16 - August 27, 2022)



Installation view of Lola Montes, *Faccia d'angelo, Every angel has another face*
Nino Mier Gallery, Glassell Park (July 16 - August 27, 2022)

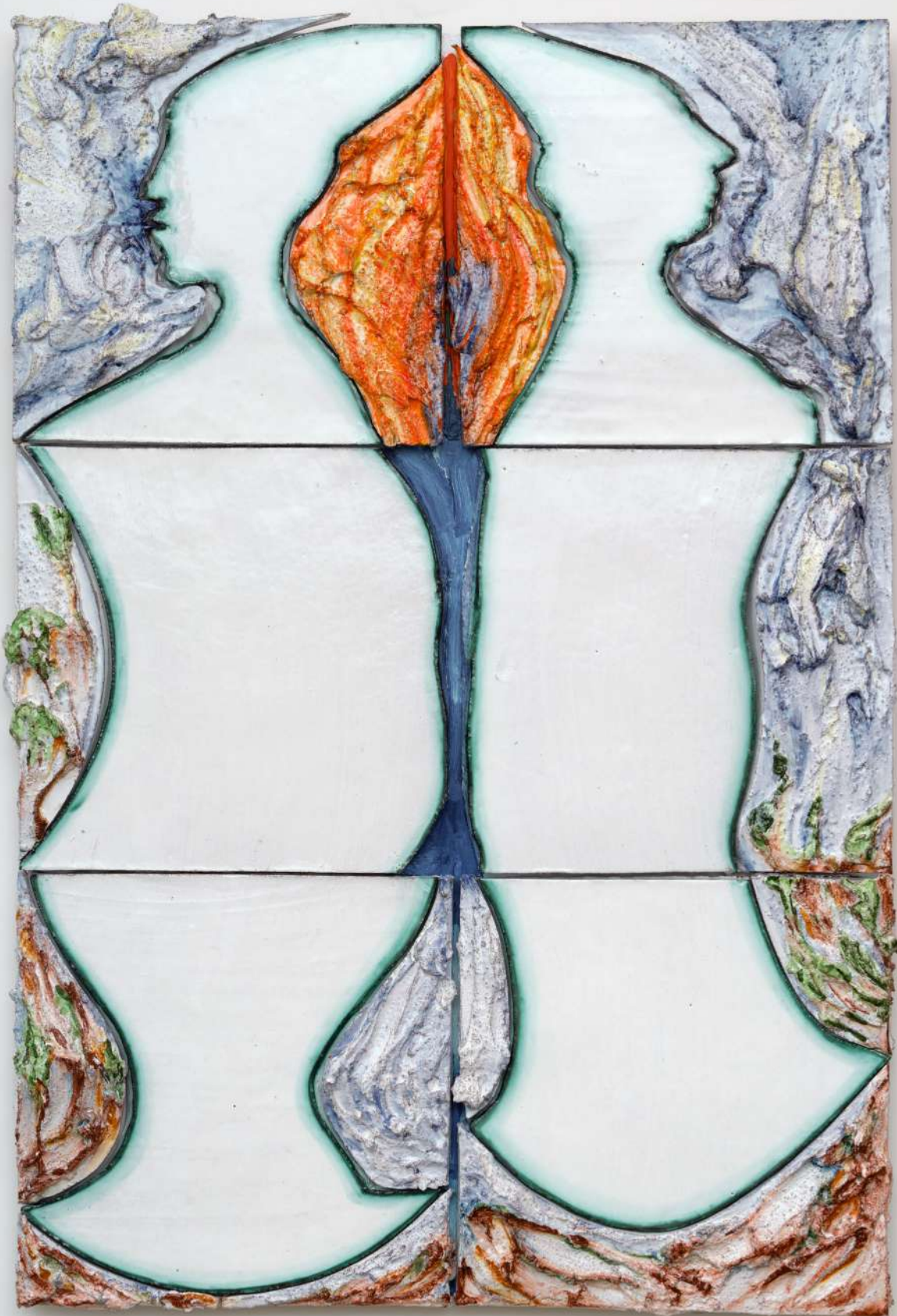


Orange peace dismantled by cells before unity, 2022 | Hand painted terracotta tiles, mounted on aluminum backing
42 1/2 x 30 x 2 1/2 in, 108 x 76.2 x 6.3 cm | (LMO22.031)

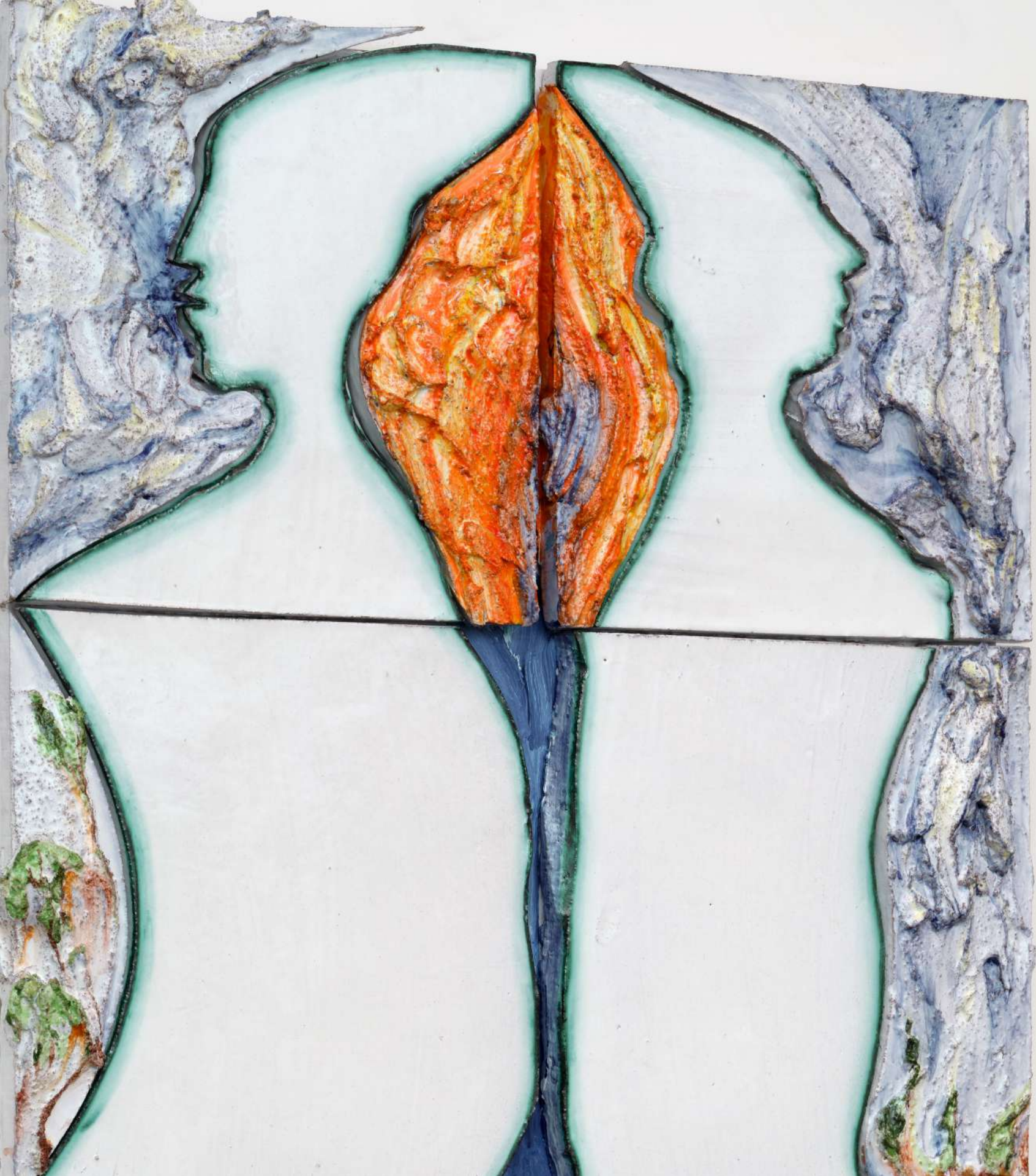




Installation view of Lola Montes, *Faccia d'angelo, Every angel has another face*
Nino Mier Gallery, Glassell Park (July 16 - August 27, 2022)



Oracle, 2022 | Hand painted terracotta relief tiles, mounted on aluminum backing
48 1/2 x 33 x 3 1/4 in, 123.2 x 83.8 x 8.3 cm | (LMO22.033)





Installation view of Lola Montes, *Faccia d'angelo, Every angel has another face*
Nino Mier Gallery, Glassell Park (July 16 - August 27, 2022)



Crèche, 2022 | Hand painted terracotta relief tiles, mounted on aluminum backing
23 3/4 x 15 3/4 x 2 1/2 in, 60.3 x 40 x 6.3 cm | (LMO22.035)





Installation view of Lola Montes, *Faccia d'angelo, Every angel has another face*
Nino Mier Gallery, Glassell Park (July 16 - August 27, 2022)



Ascending souls, 2022 | Hand painted terracotta relief tiles, mounted on aluminum backing
47 1/2 x 32 x 3 in, 120.7 x 81.3 x 7.6 cm | (LMO22.034)





Installation view of Lola Montes, *Faccia d'angelo, Every angel has another face*
Nino Mier Gallery, Glassell Park (July 16 - August 27, 2022)



Installation view of Lola Montes, *Faccia d'angelo, Every angel has another face*
Nino Mier Gallery, Glassell Park (July 16 - August 27, 2022)



Spell, 2022 | Hand painted terracotta relief tiles, mounted on aluminum backing | 64 x 33 x 4 1/4 in, 162.6 x 83.8 x 10.8 cm | (LMO22.032)





Japanese Kiss, 2022 | Hand painted terracotta tiles, mounted on aluminum backing | 15 3/4 x 15 3/4 x 3 in, 40 x 40 x 7.6 cm | (LMO22.036)





Release, 2022 | Hand painted terracotta tiles, mounted on aluminum backing | 30 x 31 3/4 x 2 1/4 in, 76.2 x 80.6 x 5.7 cm
(LMO22.037)





Installation view of Lola Montes, *Faccia d'angelo, Every angel has another face*
Nino Mier Gallery, Glassell Park (July 16 - August 27, 2022)



After Life, 2022 | Hand painted terracotta relief, mounted on aluminum backing | 18 1/2 x 18 1/2 x 3 in, 47 x 47 x 7.6 cm
(LMO22.038)





After Life, 2022 | Hand painted terracotta relief, mounted on aluminum backing | 18 1/2 x 18 1/2 x 3 in, 47 x 47 x 7.6 cm | (LMO22.038)





Installation view of Lola Montes, *Faccia d'angelo, Every angel has another face*
Nino Mier Gallery, Glassell Park (July 16 - August 27, 2022)



Installation view of Lola Montes, *Faccia d'angelo, Every angel has another face*
Nino Mier Gallery, Glassell Park (July 16 - August 27, 2022)



Sylph, 2022 | Hand painted terracotta relief, mounted on aluminum backing | 16 1/2 x 16 3/4 x 3 1/2 in, 41.9 x 42.5 x 8.9 cm
(LMO22.040)





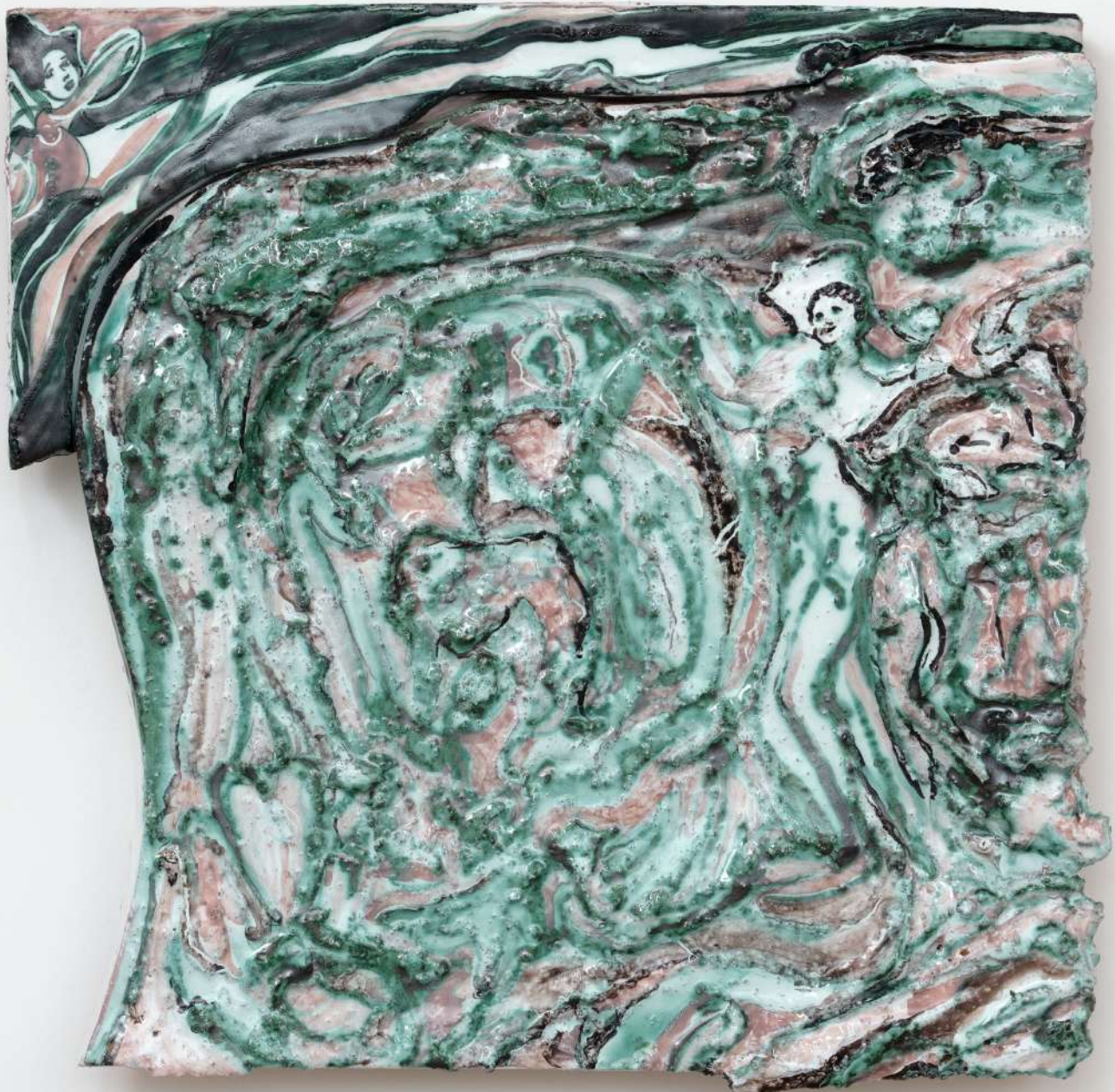
La Terra trema, 2022 | Hand painted terracotta relief, mounted on aluminum backing
| 15 1/2 x 16 1/2 x 3 1/2 in, 39.4 x 41.9 x 8.9 cm | (LMO22.041)



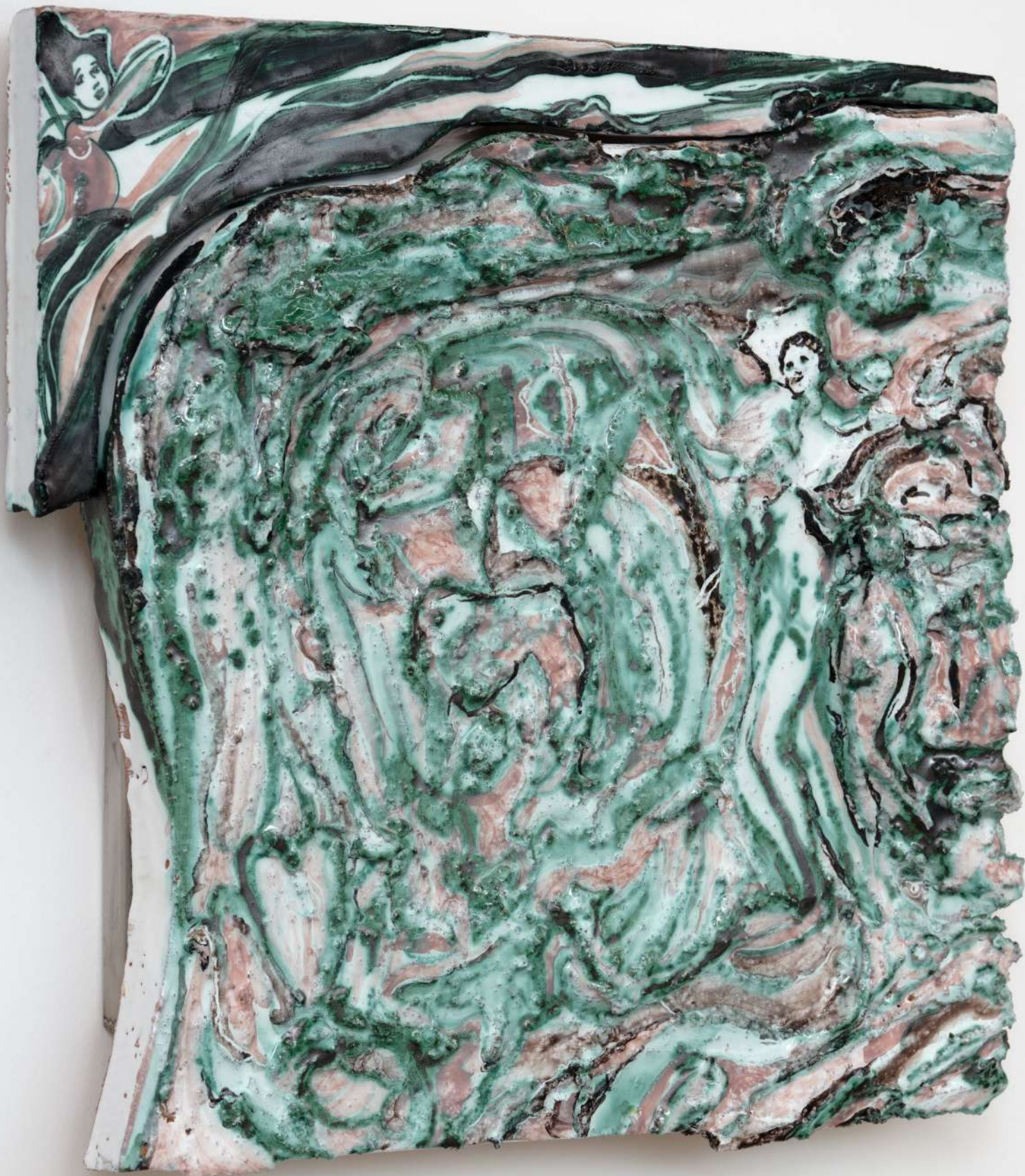


Potentia (the potential of the Univers transforming), 2022 | Hand painted terracotta relief, mounted on aluminum backing
16 1/2 x 16 x 3 in 41.9 x 40.6 x 7.6 cm | (LMO22.042)





Separadio, 2022 | Hand painted terracotta relief, mounted on aluminum backing |
16 x 16 x 3 in, 40.6 x 40.6 x 7.6 cm | (LMO22.043)





Aiolos, 2022 | Hand painted terracotta relief, mounted on aluminum backing
15 1/2 x 17 1/4 x 2 1/2 in, 39.4 x 43.8 x 6.3 cm | (LMO22.045)





Installation view of Lola Montes, *Faccia d'angelo, Every angel has another face*
Nino Mier Gallery, Glassell Park (July 16 - August 27, 2022)



Aiolos, 2022 | Hand painted terracotta relief, mounted on aluminum backing
15 1/2 x 17 1/4 x 2 1/2 in, 39.4 x 43.8 x 6.3 cm | (LMO22.045)





Installation view of Lola Montes, *Faccia d'angelo, Every angel has another face*
Nino Mier Gallery, Glassell Park (July 16 - August 27, 2022)



Installation view of Lola Montes, *Faccia d'angelo, Every angel has another face*
Nino Mier Gallery, Glassell Park (July 16 - August 27, 2022)



Aiolos, 2022 | Hand painted terracotta relief, mounted on aluminum backing
15 1/2 x 17 1/4 x 2 1/2 in, 39.4 x 43.8 x 6.3 cm | (LMO22.045)





Installation view of Lola Montes, *Faccia d'angelo*, *Every angel has another face*
Nino Mier Gallery, Glassell Park (July 16 - August 27, 2022)

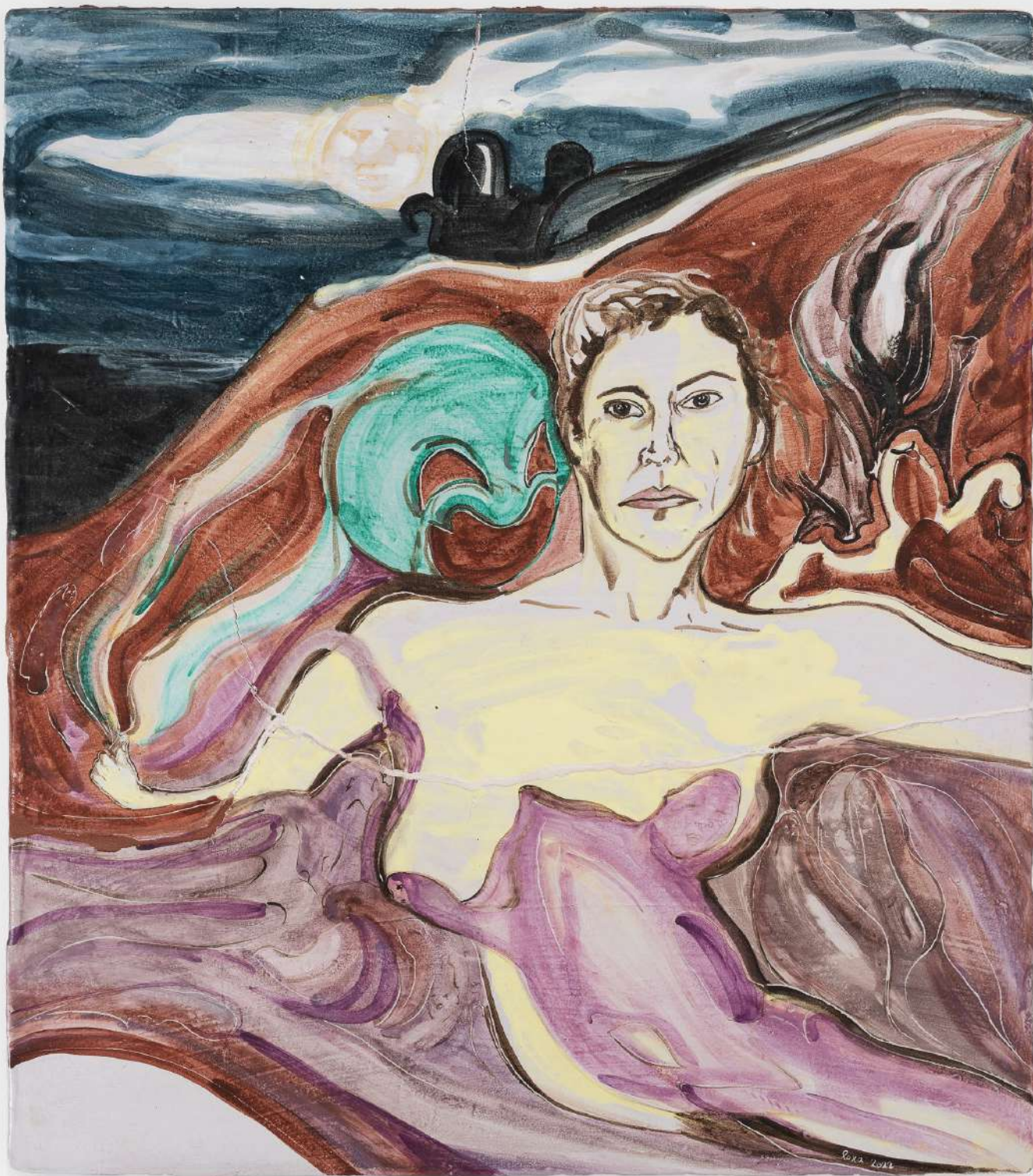


Merkabah, 2022 | Hand painted terracotta tile, vintage wood table base |
41 1/4 x 47 1/4 x 1 1/2 in, 104.8 x 120 x 3.8 cm (LMO22.029)





Installation view of Lola Montes, *Faccia d'angelo, Every angel has another face*
Nino Mier Gallery, Glassell Park (July 16 - August 27, 2022)



Lune, 2022 | Hand painted terracotta tile | 43 1/2 x 36 1/2 x 2 in, 110.5 x 92.7 x 5.1 cm | (LMO22.030)



Loya 1022





Installation view of Lola Montes, *Faccia d'angelo, Every angel has another face*
Nino Mier Gallery, Glassell Park (July 16 - August 27, 2022)



Alex, 2022 | Hand painted terracotta tile, mounted on aluminum backing |
15 3/4 x 15 3/4 x 2 in 40 x 40 x 5.1 cm | (LMO22.060)





Installation view of Lola Montes, *Faccia d'angelo, Every angel has another face*
Nino Mier Gallery, Glassell Park (July 16 - August 27, 2022)



Angel projections 3, 2022 | Hand painted terracotta lamp | 17 1/2 x 12 x 12 in, 44.5 x 30.5 x 30.5 cm
(LMO22.026)





Installation view of Lola Montes, *Faccia d'angelo, Every angel has another face*
Nino Mier Gallery, Glassell Park (July 16 - August 27, 2022)



Carciofi Candelabra 17, 2022 | Hand painted terracotta candelabra | 13 x 7 x 7 in, 33 x 17.8 x 17.8 cm
(LMO22.018)



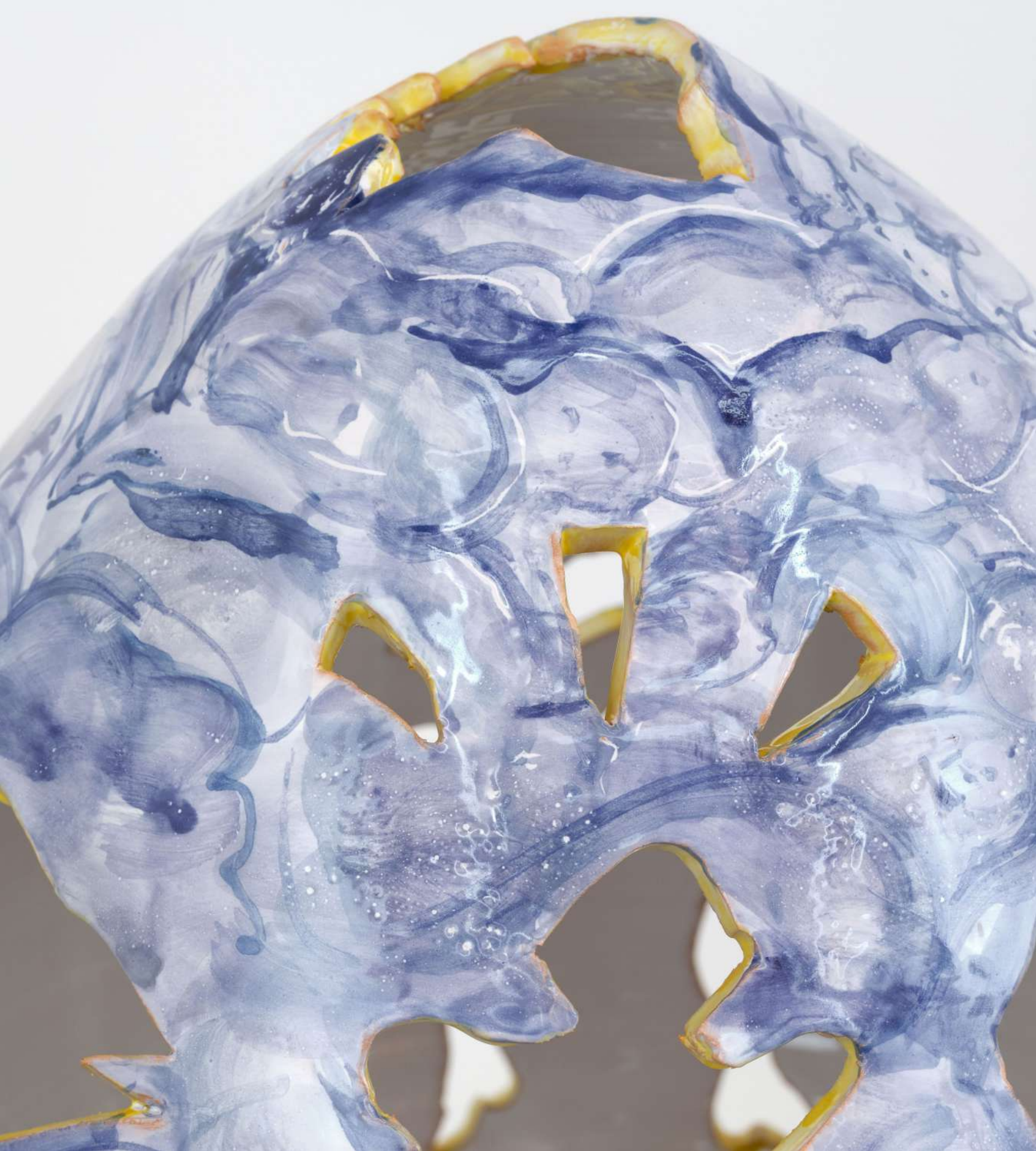


Carciofi Candelabra 6, 2022 | Hand painted terracotta candelabra | 15 1/4 x 7 x 7 in, 38.7 x 17.8 x 17.8 cm
(LMO22.006)





Angel projections 1, 2022 | Hand-painted terracotta lamp | 14 3/4 x 12 x 12 in, 37.5 x 30.5 x 30.5 cm
(LMO22.016)





Installation view of Lola Montes, *Faccia d'angelo, Every angel has another face*
Nino Mier Gallery, Glassell Park (July 16 - August 27, 2022)



Carciofi Candelabra 3, 2022 | Hand painted terracotta candelabra | 12 3/4 x 7 x 7 in, 32.4 x 17.8 x 17.8 cm
(LMO22.003)





Carciofi Candelabra 17, 2022 | Hand painted terracotta candelabra | 16 1/2 x 7 x 7 in, 41.9 x 17.8 x 17.8 cm
(LMO22.017)





Angel projections 2, 2022 | Hand-painted terracotta lamp | 17 1/2 x 12 x 12 in, 44.5 x 30.5 x 30.5 cm
(LMO22.025)





Carciofi Candelabra 12, 2022 | Hand painted terracotta candelabra
16 1/2 x 7 x 7 in, 41.9 x 17.8 x 17.8 cm | (LMO22.012)





Carciofi Candelabra 11, 2022 | Hand painted terracotta candelabra
16 1/2 x 6 3/4 x 6 3/4 in, 41.9 x 17.1 x 17.1 cm | (LMO22.011)





Installation view of Lola Montes, *Faccia d'angelo, Every angel has another face*
Nino Mier Gallery, Glassell Park (July 16 - August 27, 2022)



Carciofi Candelabra 21, 2022 | Hand painted terracotta candelabra
12 1/2 x 7 x 7 in, 31.8 x 17.8 x 17.8 cm | (LMO22.022)





Carciofi Candelabra 14, 2022 | Hand painted terracotta candelabra
12 x 6 1/4 x 6 1/4 in, 30.5 x 15.9 x 15.9 cm | (LMO22.014)





Flow vessel 1, 2022 | Hand painted terracotta pitcher | 10 1/2 x 8 1/2 x 8 in, 26.7 x 21.6 x 20.3 cm | (LMO22.052)





Flow vessel 2, 2022 | Hand painted terracotta vessel | 11 x 9 x 8 in, 27.9 x 22.9 x 20.3 cm | (LMO22.058)



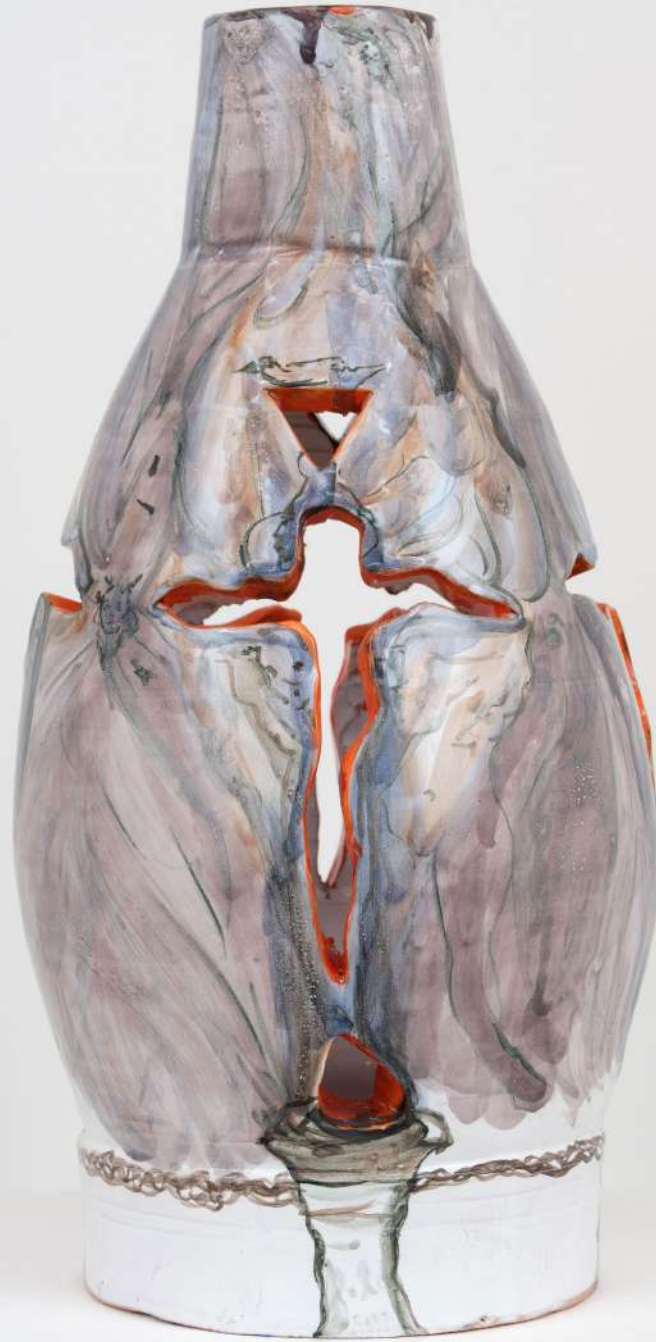


Installation view of Lola Montes, *Faccia d'angelo, Every angel has another face*
Nino Mier Gallery, Glassell Park (July 16 - August 27, 2022)

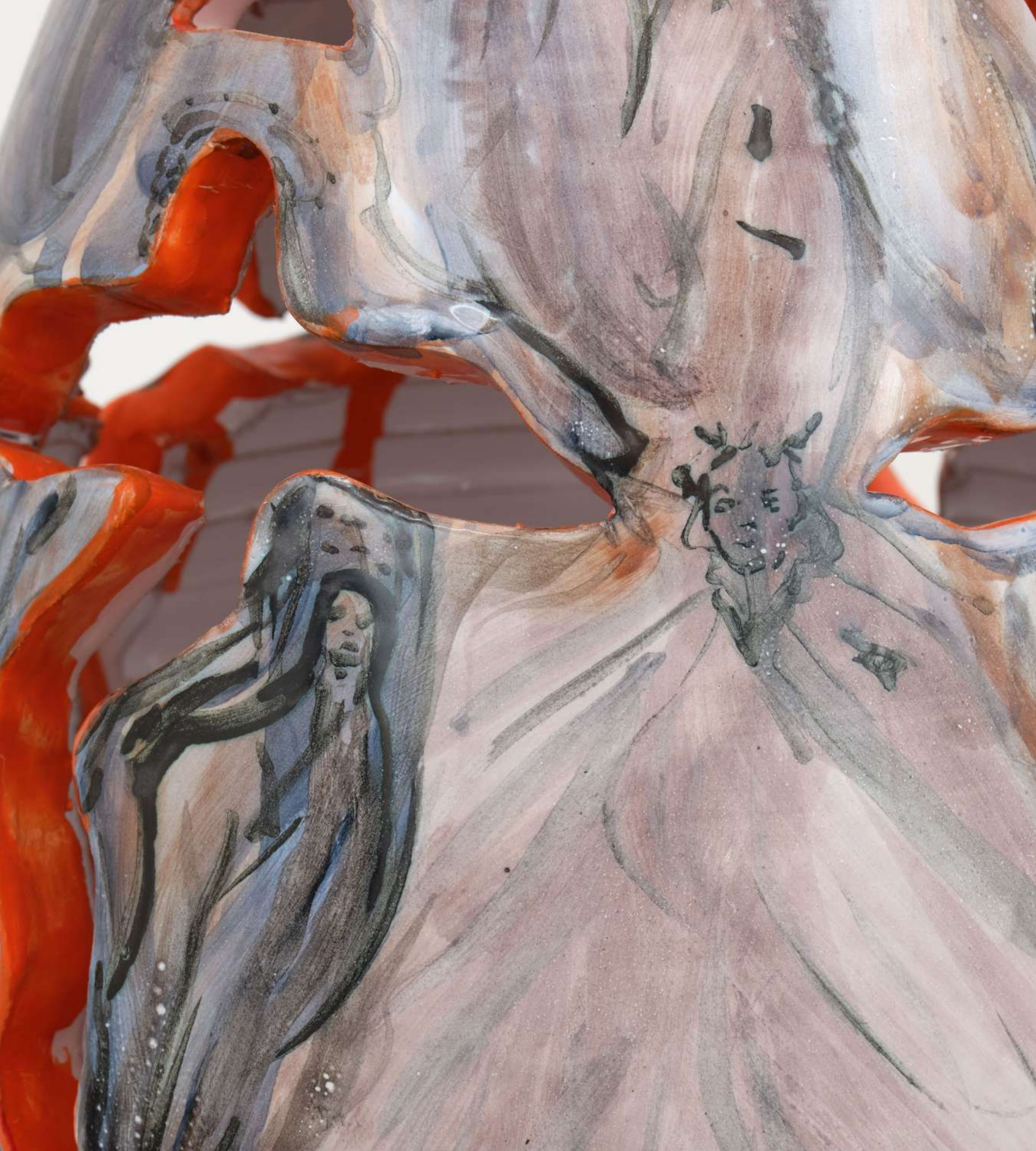


Tittle kimono vase, 2022 | Hand painted terracotta vase | 10 3/4 x 1/2 in, 27.3 x 1.3 cm | (LMO22.065)





Lamp 5, 2022 | Hand painted terracotta lamp | 16 3/4 x 7 x 7 in, 42.5 x 17.8 x 17.8 cm | (LMO22.028) |





Installation view of Lola Montes, *Faccia d'angelo, Every angel has another face*
Nino Mier Gallery, Glassell Park (July 16 - August 27, 2022)



Paper plate Bottom feeder, 2022 | Hand painted terracotta bowl | 12 x 12 x 4 in, 30.5 x 30.5 x 10.2 cm | (LMO22.051)





Paper plate Mary fish, 2022 | Hand painted terracotta bowl
11 x 11 x 5 in, 27.9 x 27.9 x 12.7 cm | (LMO22.053)





Paper plate Two became the same, 2022 | Hand painted terracotta bowl | 11 x 11 x 4 in 27.9 x 27.9 x 10.2 cm
(LMO22.054)





Installation view of Lola Montes, *Faccia d'angelo, Every angel has another face*
Nino Mier Gallery, Glassell Park (July 16 - August 27, 2022)



Installation view of Lola Montes, *Faccia d'angelo, Every angel has another face*
Nino Mier Gallery, Glassell Park (July 16 - August 27, 2022)



Ayahuasca plate, 2022 | Hand painted terracotta bowl
10 1/2 x 10 1/2 x 3 1/2 in, 26.7 x 26.7 x 8.9 cm | (LMO22.056) |



SICILY 2021



Indigenous plate, 2022 | Hand painted terracotta bowl
10 1/2 x 10 1/2 x 3 in, 26.7 x 26.7 x 7.6 cm | (LMO22.057)



Lola Sicilia
2021

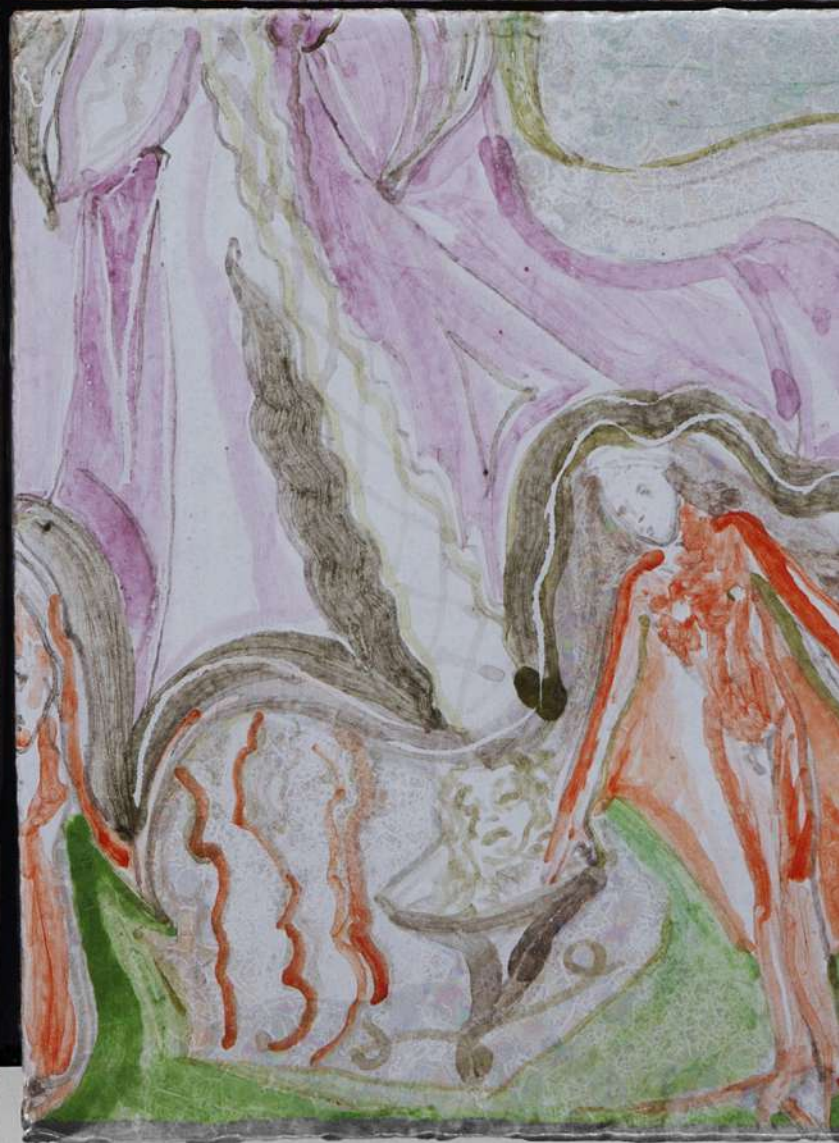


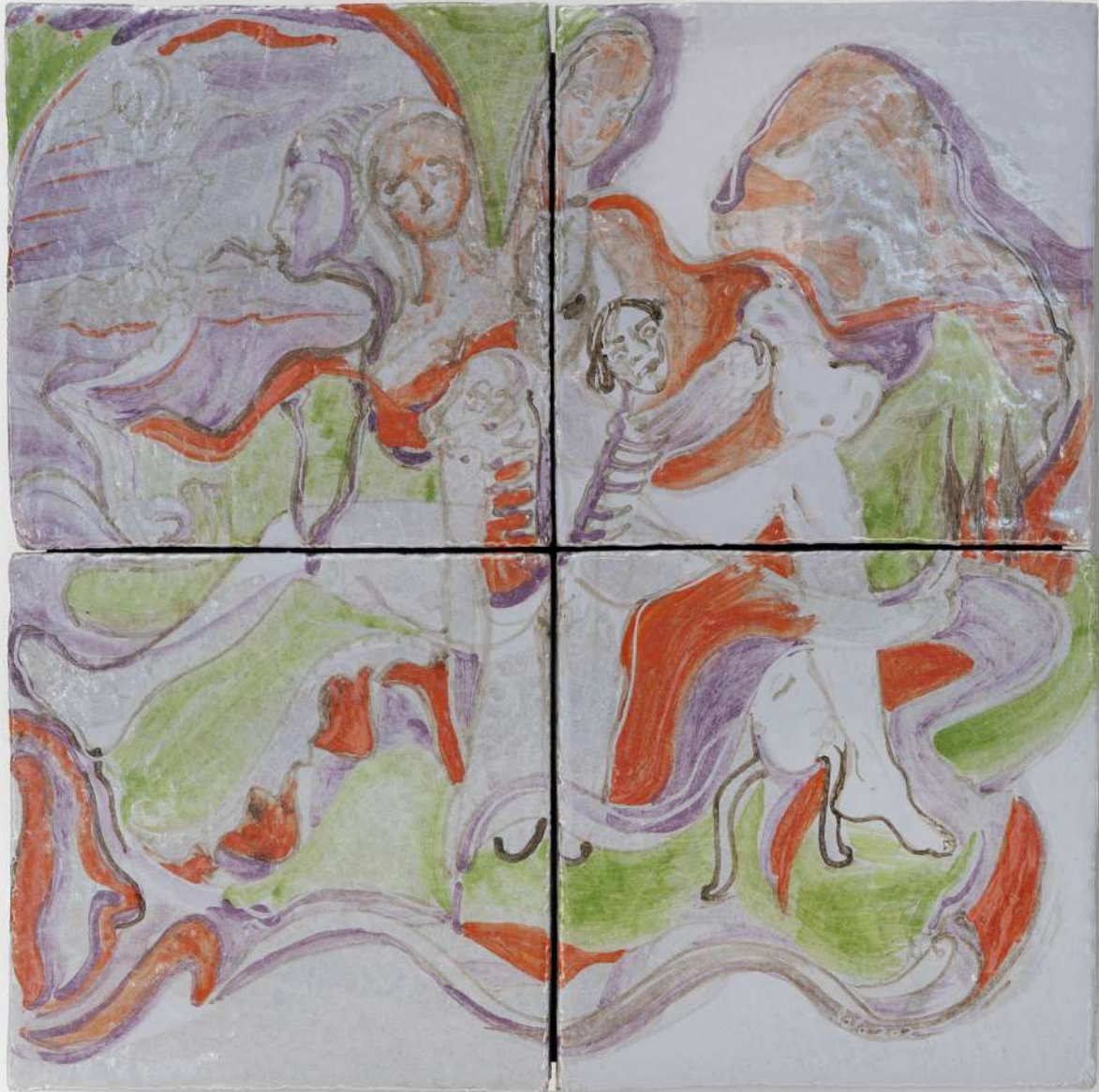
Dragon Blood, 2022 | Hand painted terracotta tiles, mounted on aluminum backing
23 5/8 x 23 5/8 x 2 in, 60 x 60 x 5.1 cm | (LMO22.061)





Lilac One, 2022 | Hand painted terracotta tiles, mounted on aluminum backing |
23 5/8 x 23 5/8 x 2 in, 60 x 60 x 5.1 cm | (LMO22.062)





Lilac Three, 2022 | Hand painted terracotta tiles, mounted on aluminum backing
15 3/4 x 15 3/4 x 2 in, 40 x 40 x 5.1 cm | (LMO22.063)





Lilac Two, 2022 | Hand painted terracotta tiles, mounted on aluminum backing
15 3/4 x 15 3/4 x 2 in, 40 x 40 x 5.1 cm | (LMO22.064)





LOLA MONTES

Born 1981, New York, NY
Lives and works in Milan, Italy

EDUCATION

2008 BFA, Cooper Union, New York, NY, US

SELECTED EXHIBITIONS

- 2022 Faccia d'angelo, Every angel has another face, Nino Mier Gallery Glassell Park, Los Angeles, CA, US
Uncanny Depths, Galerie MAMO, Centre d'art de la Cité Radieuse, Marseille, FR
Paradise Room, Goodroom Munich, DE
- 2021 The Lens of Scarcity & Abundance innen Space, Zürich, CH
In Pursuit of Painting, Tripoli Gallery, Wainscott, New York, NY, US
Ceramic Viva, Fuori Salone, Milan, IT
- 2020 Interior, NOMAD St Moritz, Muse Gallery, Samedan, CH
- 2018 Group show, Goodroom, Munich, DE
Digging For Diamonds in the Disco Club, Rhubarb, New York, NY, US
- 2017 Occupy Mana, Mana Contemporary, The Brooklyn Rail, Jersey City, NJ, US
Fluttuazioni, Palazzo Marin, Zuecca Projects, Venice Biennale, Venice, IT
- 2016 Texting Spirits Ileana Tounta Contemporary Art Center, Athens, GR
Unknown, Ludwig Museum, Koblenz, DE
Ritratti di Laurito, Solo show, Tre ville, Positano, IT
Hydra School Projects, Hydra, GR
- 2015 Akashic Records, Tripoli Gallery, East Hampton, NY, US
Selfies & Portraits of the East End, Guild Hall, East Hampton, NY, US
- 2014 Heaven, Miami Basel at the Shelbourne Hotel, Miami Beach, FL, US
Picture of Lola, The Fireplace Project
Forms Wrestling with Existence, Eden Rock Gallery, Saint Barthélemy, FR
- 2013 Dialogue Between Nature & A Soul, a film on Luigi Ontani, presented at the 55th Venice Biennale,
Venice, IT
Calligraffiti: 1984-2013. Leila Heller Gallery, New York, NY, US
St. Barthélemy to Southampton, Tripoli Gallery, Southampton, NY, US
Within Reach. Tripoli Gallery Pop-Up Space: 980 Madison, New York, NY, US Manifesto. FIAF
(French Institute Alliance Française). New York, NY, US



- 2012 Watercolors. Phillips de Pury. NADA New York, New York, NY, US
The Hole. Miami, FL, US
Night Vision. Tripoli Gallery. Southampton, NY, US
- 2011 Love Before Intimacy. The Hole. New York, NY, US
Iodine Portraits. Tripoli Gallery. Southampton, NY, US
- 2009 Infinite Blinding Beam. Tripoli Gallery. Southampton, NY, US
- 2005 Marder's Gallery. Bridgehampton, NY, US
Tuscan Sun Festival. Cortona, IT
Sandro Chia Studio. Rome, IT
- 2003 Gallery Jorg Hassenbach (in conjunction with Art Brussels). Antwerp, BE
The Incubator. New York, NY, US
- 2001 Ace Gallery. Los Angeles, CA, US

FILMS

- 2020 Luisa Beccaria SS21 Know Thyself campaign video
- 2017 Jesus knows the reason when I die I will ask him - Portrait of Vahakn Arslanian video
Jupiter Benjamin Clementine music video
- 2014 Benjamin Clementine music video
- 2013 Dialogue Between a Soul and Nature a film based on Giacomo Leopardi starring Luigi Ontani
- 2009 AQUA-REVE, a 42 second dream for 42Below
- 2007 Training Day, a Nike commercial for Steve Nash Berlin, Various music videos for Lou Reed's concert and feature film
MA VENDEUSE, a fashion film for Zac Posen presented on Style.com
- 2005 Laughing and Crying, 8mm color film
- 2002 Fisk Kiss, 16mm color film
- 2000 Behind the Scenes: Before Night Falls, documentary for the feature film DVD
- 1999 Lazy Bones, hand-painted frames 16mm black and white film



OTHER SELECTED PROJECTS

- 2016 Collaboration Alice + Olivia, limited edition scarves
- 2014 Collaboration Alice + Olivia, textile design
- 2013 Collaboration Tommy Hilfiger, special edition surfboards
- 2012 Collaboration Sportmax, Project Carte Blanche
- 2011 Collaboration Max Mara: Carte Blanche, Silk Scarves
Impossibili Lola Schnabel, photo essay for Corriere della sera
- 2010 Board of advisors, Anthology Film Archive (through present)
Benefit concert to digitize 70,000 independent films for Anthology Film Archive (Curator)
Commercial film for Melissa Shoes (Creator & Director)
- 2007 10 Album covers for John Frusciante solo albums 9 (Designer)
- 2006 Projections for Lou Reed's concert in Berlin
- 2004 Interview, photo essay for article on Edie Sedgewick, Flaunt Magazine
- 2001 Project Alabama. Two hundred and fifty individual ink drawings, silk screens and collage designs for custom clothing line
- 1997 Dune. Drawings by Lola Schnabel, photographs by Mario Sorrenti
Frank. Drawings by Lola Schnabel, photographs by Mario Sorrenti
Joe. Drawings by Lola Schnabel, photographs by Mario Sorrenti
- 1996 Visionaire. Drawings by Lola Schnabel, photographs by Francesco Sorrenti
Keds advertisement, Drawings by Lola Schnabel, photographs by Bruce Weber
- 1988 Art Random: Lola + Julian Schnabel. Art Random, Tokyo, JP

