

NINO MIER GALLERY

LOS ANGELES | BRUSSELS | NEW YORK

An abstract painting by Koshiro Akiyama, featuring a central figure in a light, textured garment. The background is composed of large, expressive brushstrokes in various colors, including deep green, dark brown, purple, orange, and yellow. The overall style is gestural and expressive, with a focus on color and form.

KOSHIRO AKIYAMA

CONTENTS

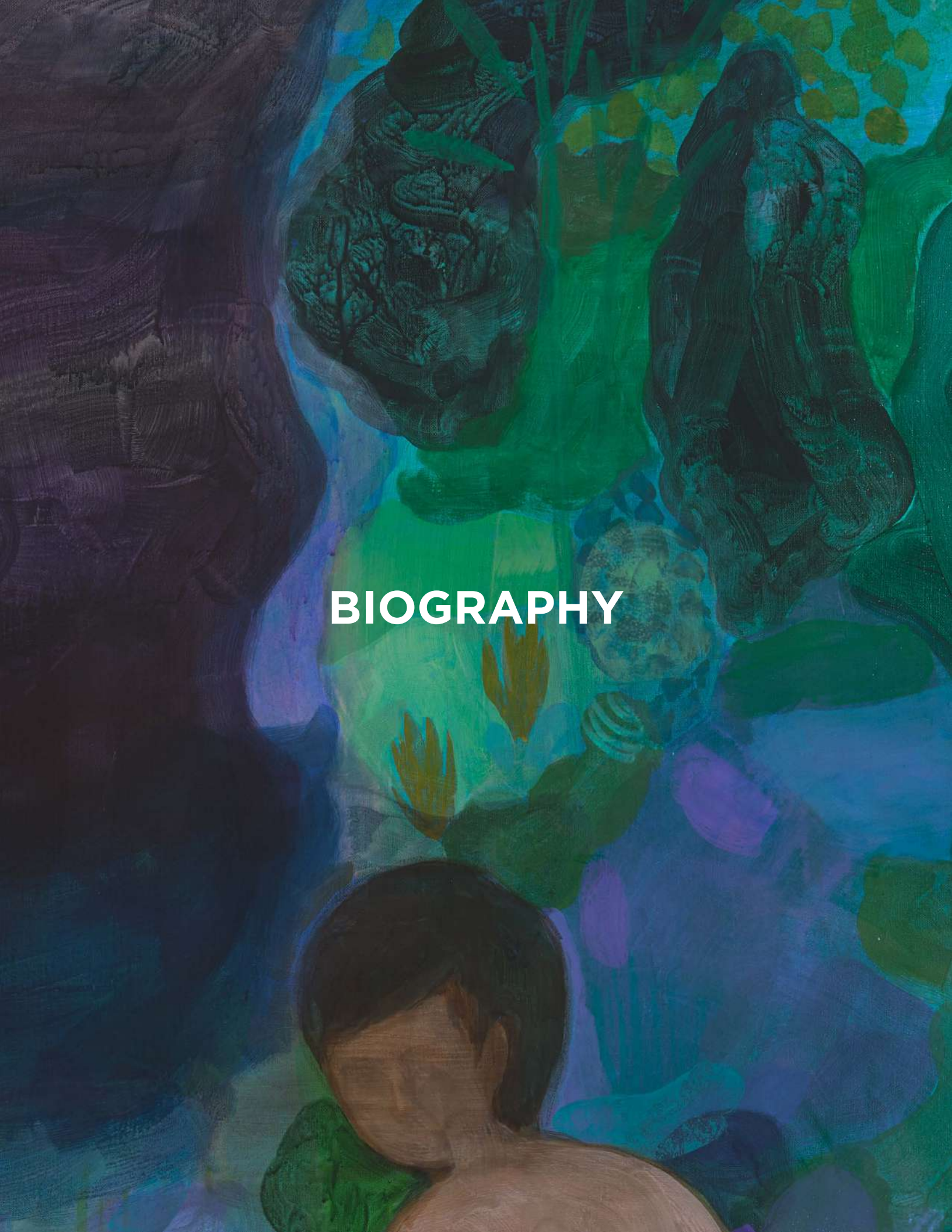
BIOGRAPHY 1

SAMPLE WORKS 3

SELECTED PROJECTS AND EXHIBITIONS 20

SELECTED PRESS 36

CURRICULUM VITAE 40



BIOGRAPHY

KOSHIRO AKIYAMA

b. 1994, Tokyo, JP

Lives and works in London, UK



Koshiro Akiyama creates an idealistic landscape that reflects on a psychological condition that deals not only with utopian ideals but also morbidity. In the mind there is a constant shift between tension and relaxation, which weaves its intimate narratives and a sense of ambiguity into the work. Using a phenomenological and simple process he depicts deeply private and intimate spaces, with a sense of compassion.

Influenced by the writings of Simone Weil (called by Susan Sontag “one of the most ... troubling witnesses to the modern travail of the spirit”), Koshiro’s work is grounded upon a melancholy rumination originating from the moment of his mother’s death. This event gave rise to both his melancholy and an impulse for escape from the inevitable fact of death.

Koshiro’s works are based on photos and memories. The mediums he uses, especially acrylic, ink and watercolour, are chosen to build up multiple transparent layers with fluid brushstrokes. Having absorbed the expressive, disturbing potential of Edvard Munch’s work, he uses vibrant, even lurid, colours and with these he constructs illusionistic and dream- like worlds. The locations are often in an outdoor setting, such as the seaside, a ski resort or a park. Koshiro employs a direct, intuitive process to use these settings to create psychologically probing paintings.

Another significant factor in the aftermath of a period of depression is the moment of huge consolation: ‘catharsis.’ This moment comes close to freeing you from anxiety or despair. In Koshiro’s work, he attempts to express the feeling of it. It’s a meditative practice. Although the figures in his paintings are presented as vulnerable, he also tries to show the resilience of the human mind that is a symbol of power and beauty. others.

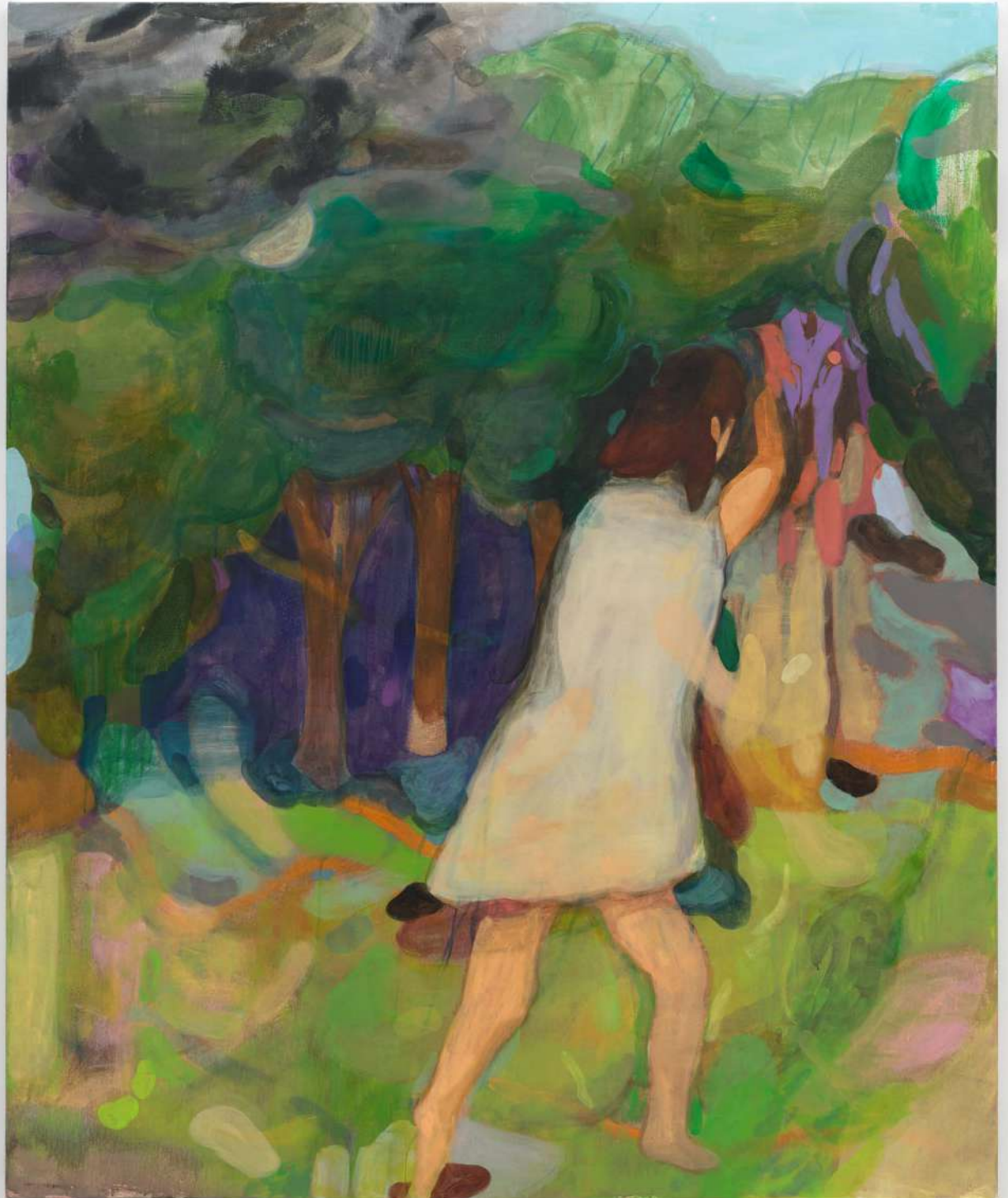
Koshiro Akiyama (b. 1994, Tokyo, JP; lives and works in London, UK) studied at Camberwell College of Arts, MA Fine Art, Painting. Received a BA and MA in Japanese-style Painting at Tokyo University of the Arts, Tokyo, JP. Akiyama has exhibited with Daniel Benjamin Gallery, London, UK; Fabien Fryns Gallery, Dubai, UAE, New Normal Projects, London, UK; Sekisho Art Museum, Shimane, JP; Royal Watercolor Society Open at Bankside Gallery, London, UK. He was nominated for the Sunny Art Prize 2022 at Sunny Art Center, London, UK and showcased his graduate work at London Grads Now 2021 at Saatchi Gallery, London, UK. Akiyama has completed residencies with The Cabin, Los Angeles, CA, US and Unit 1 Gallery, London, UK. His work is included collections such as Xiao Museum, Rizhao, CN; Soho House Collection; Nahmad Collection.

The background is a complex, abstract composition of various colors and textures. It features large, irregular patches of color, including shades of purple, blue, orange, yellow, green, and pink. The colors are layered and blended, creating a sense of depth and movement. The overall effect is reminiscent of a textured painting or a collage of different materials.

SAMPLE WORKS

**sample selection does not reflect current availability*

Hide from the rain, 2023
Signed, titled & dated on the back
Acrylic on canvas
72 x 60 in
182.9 x 152.4 cm
(KAK23.002)

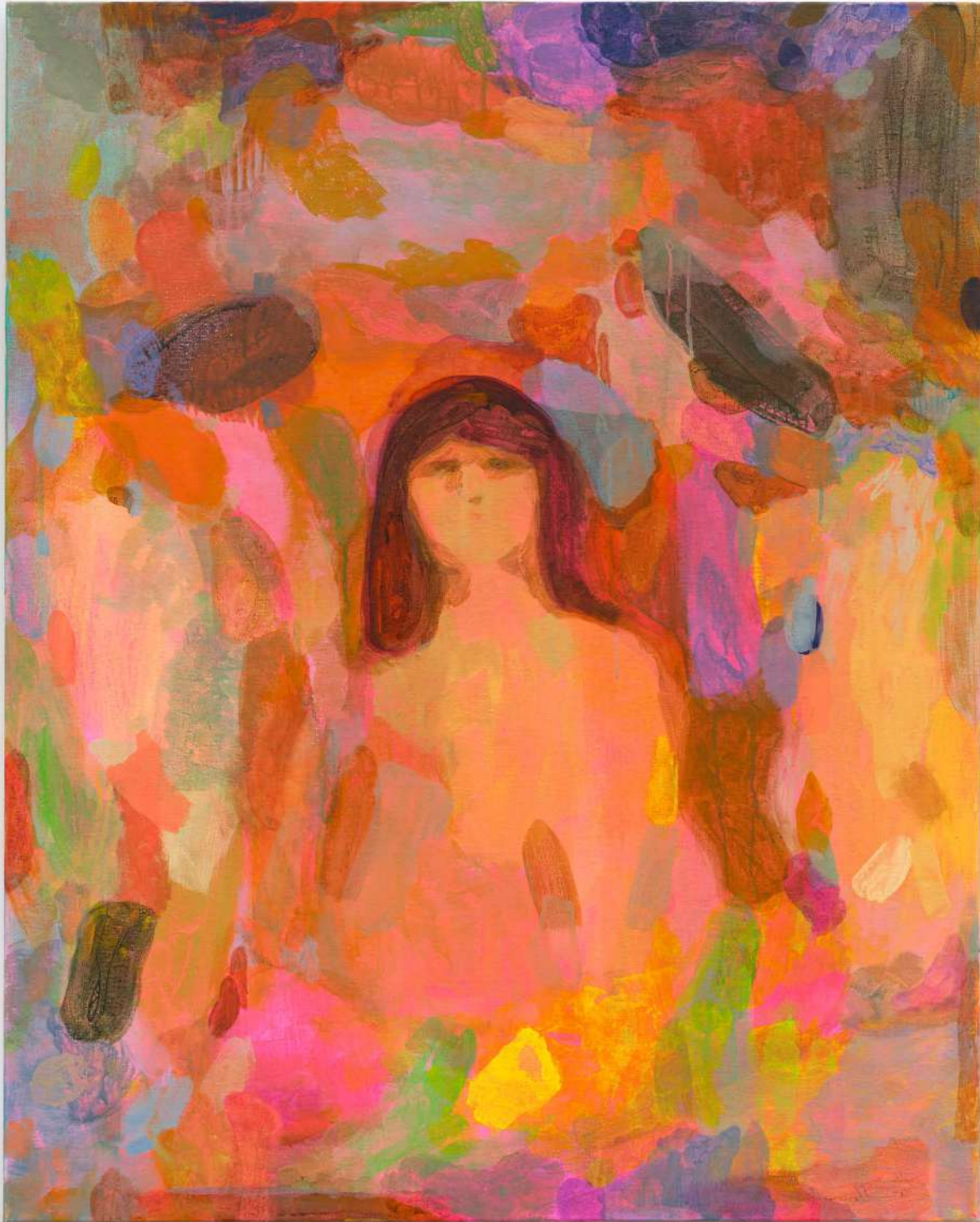






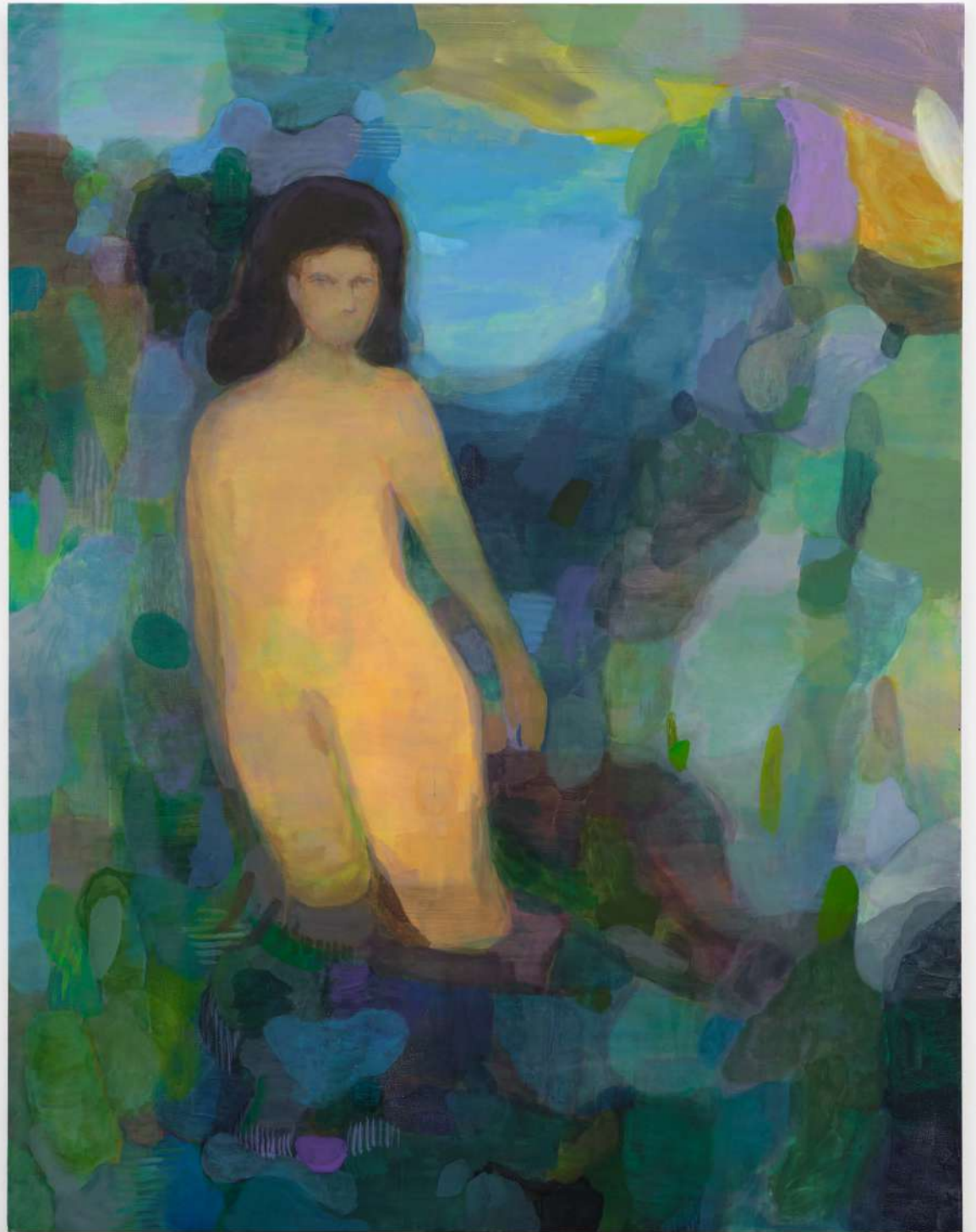
Walk in a Forest, 2023, acrylic on linen, 59 x 70 7/8 in, 150 x 180 cm, (KAK23.006)

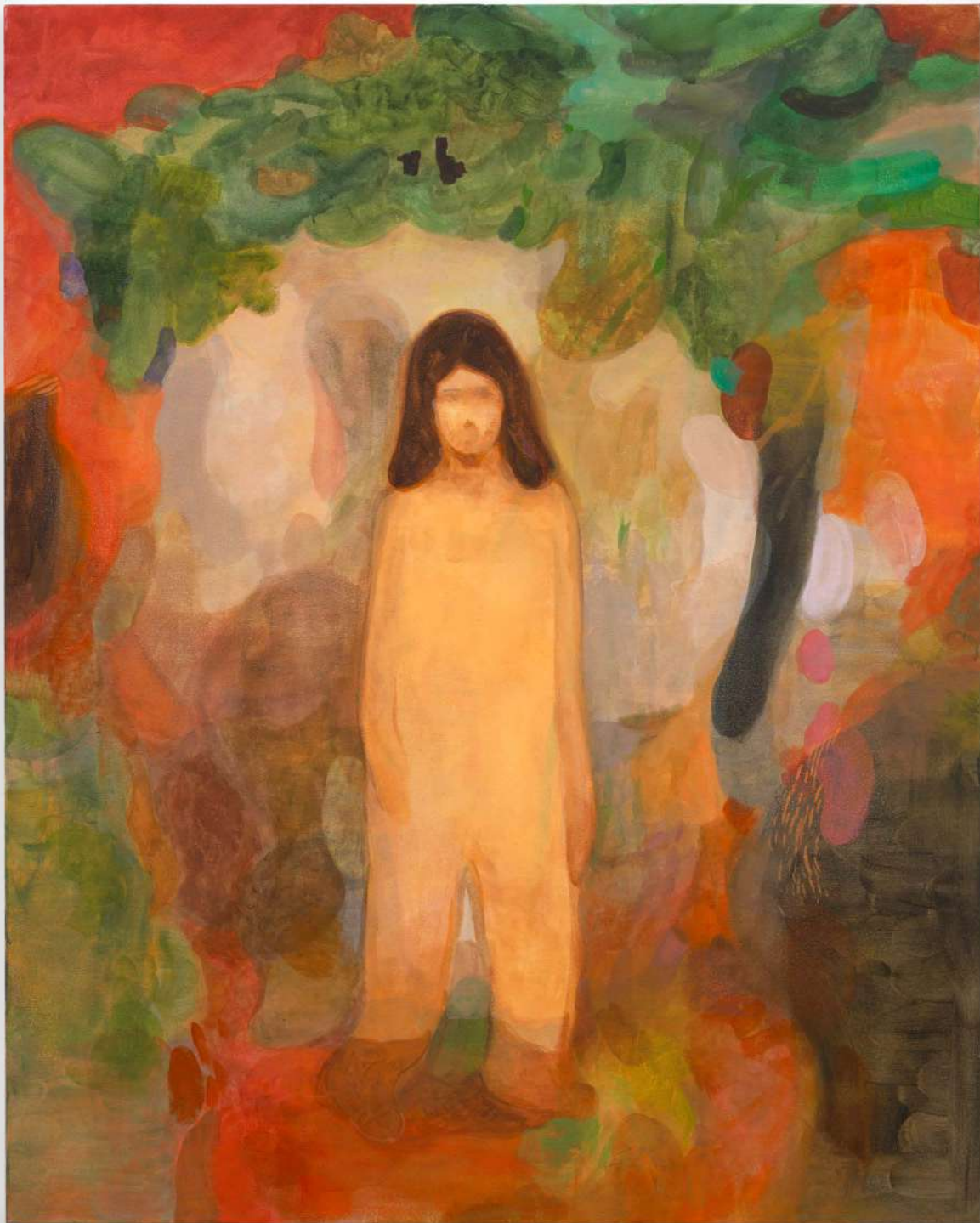




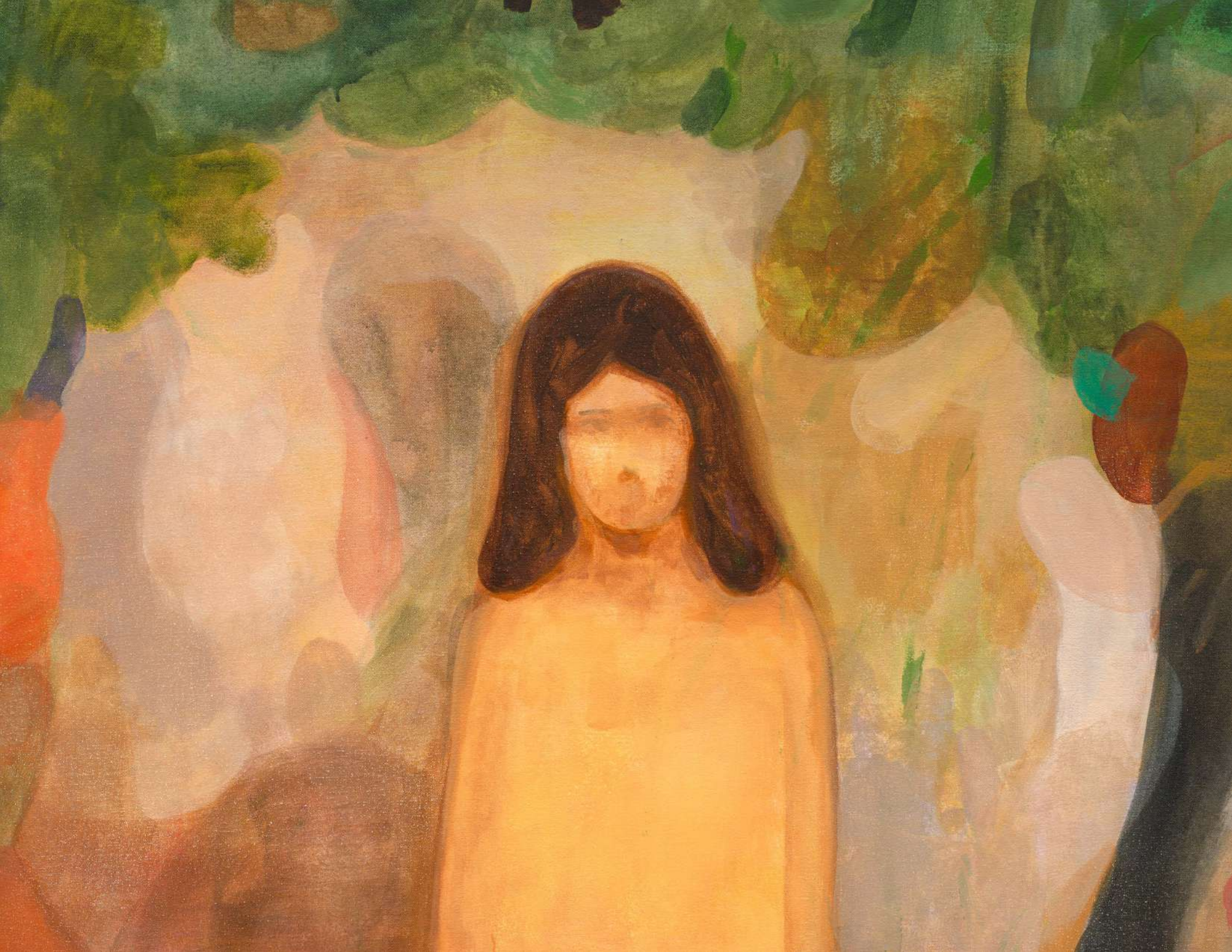
Peering Upward, 2023
Acrylic on linen
39 3/8 x 31 1/2 in
100 x 80 cm
(KAK23.021)

Coming Ashore, 2023
Acrylic on linen
90 x 69 7/8 x 1 1/4 in
228.6 x 177.5 x 3.2 cm
(KAK23.029)

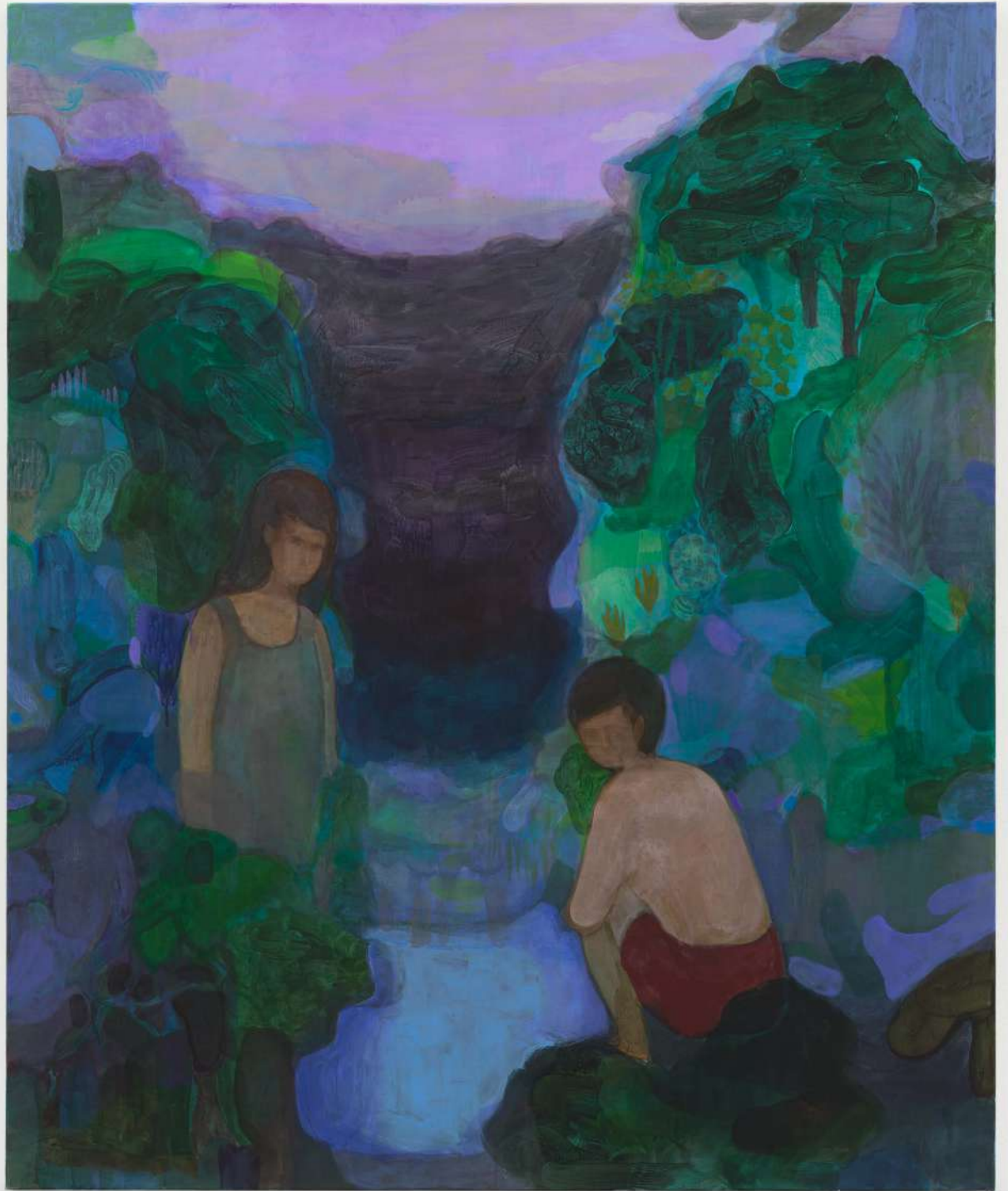




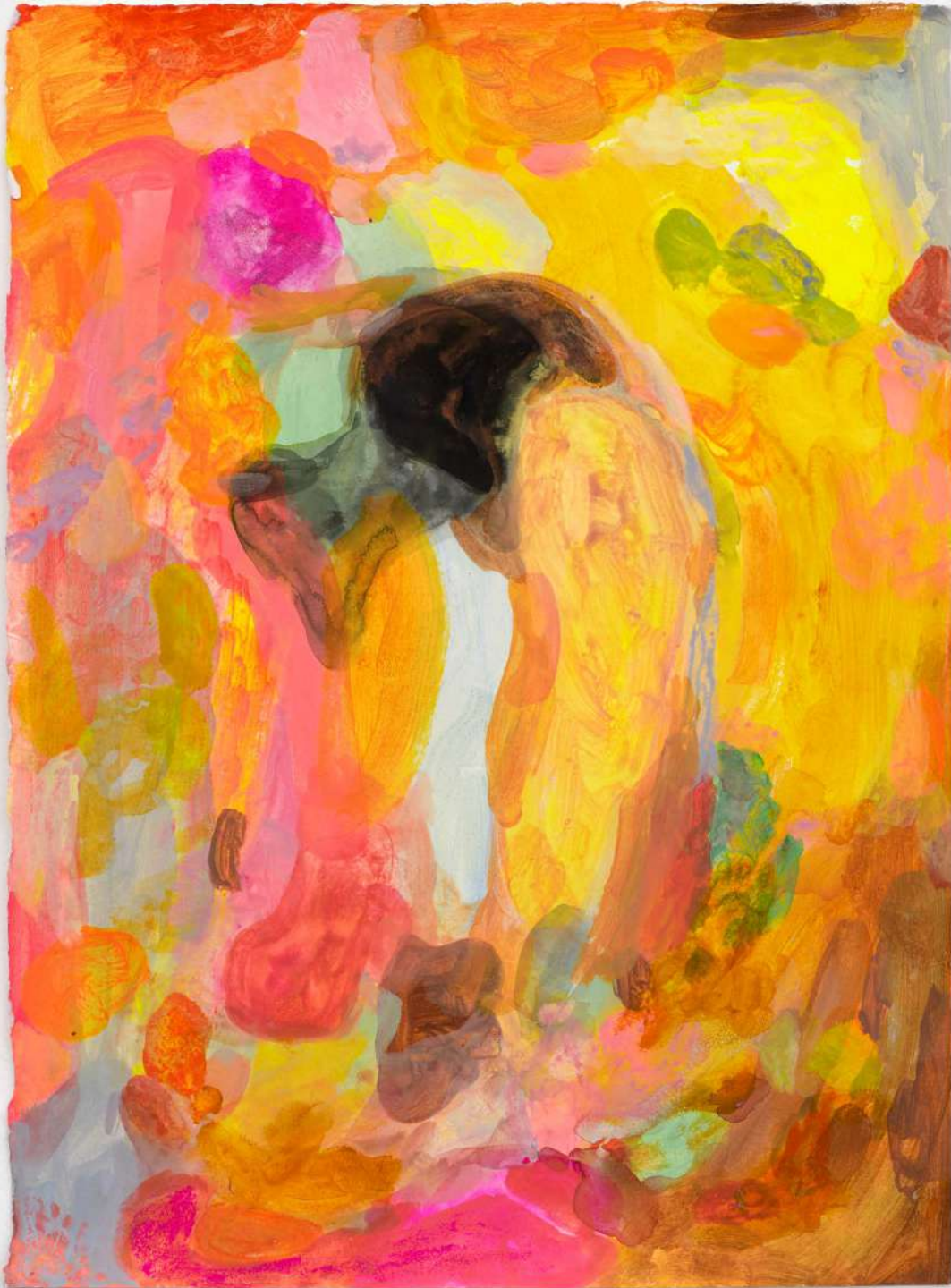
Dazzling, 2023
Acrylic on linen
60 x 48 in
152.4 x 121.9 cm
(KAK23.025)



Night Sea, 2023
Acrylic on linen
70 7/8 x 59 in
180 x 150 cm
(KAK23.005)

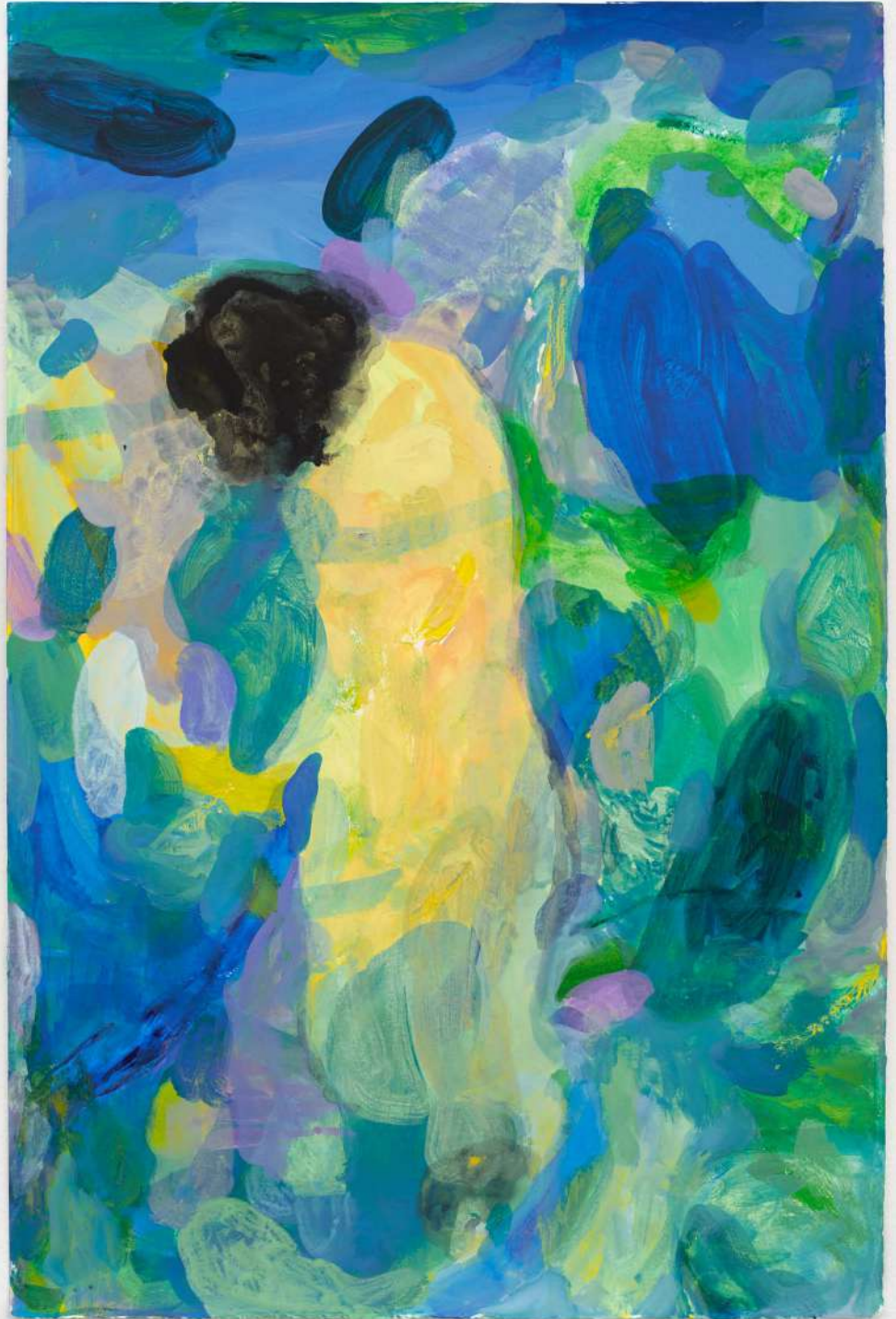


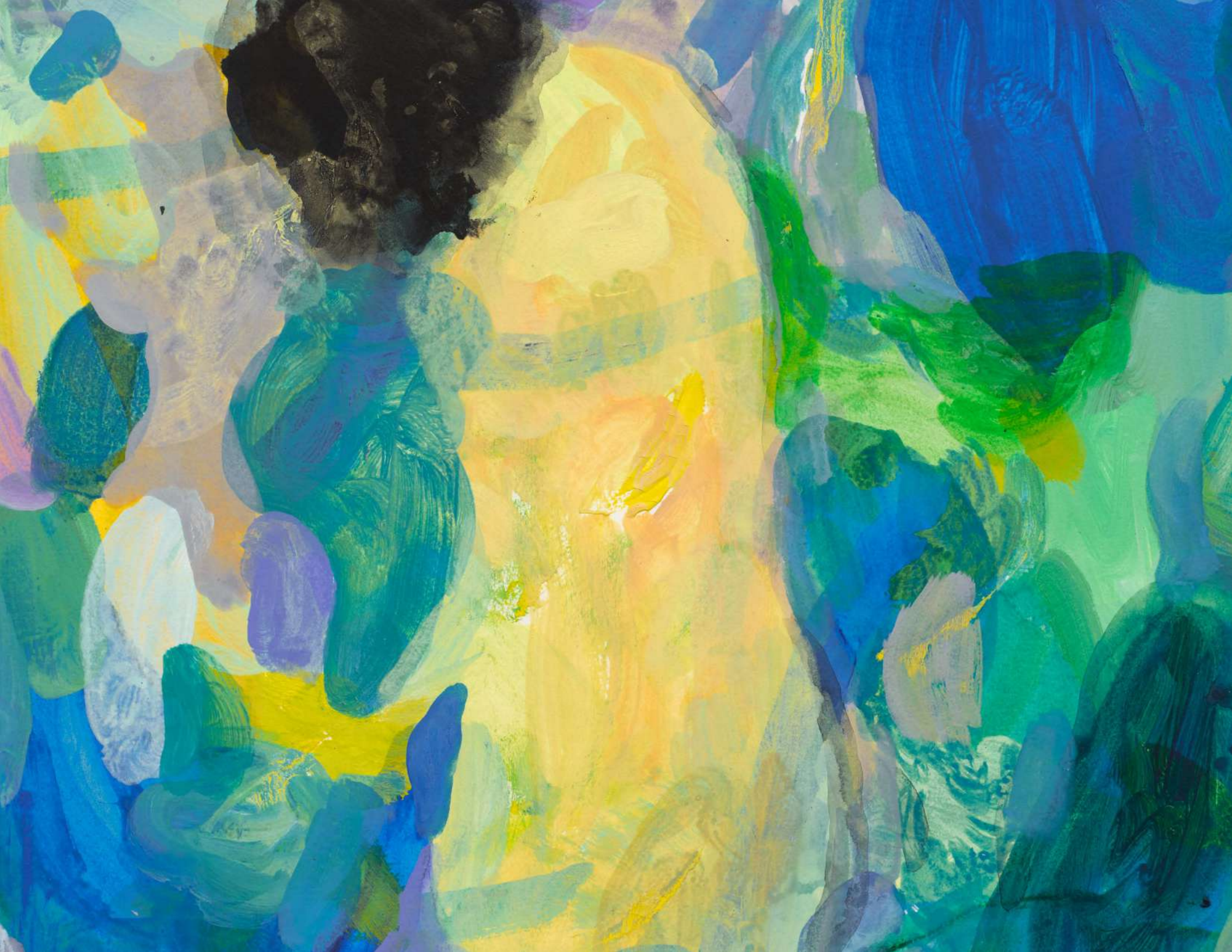




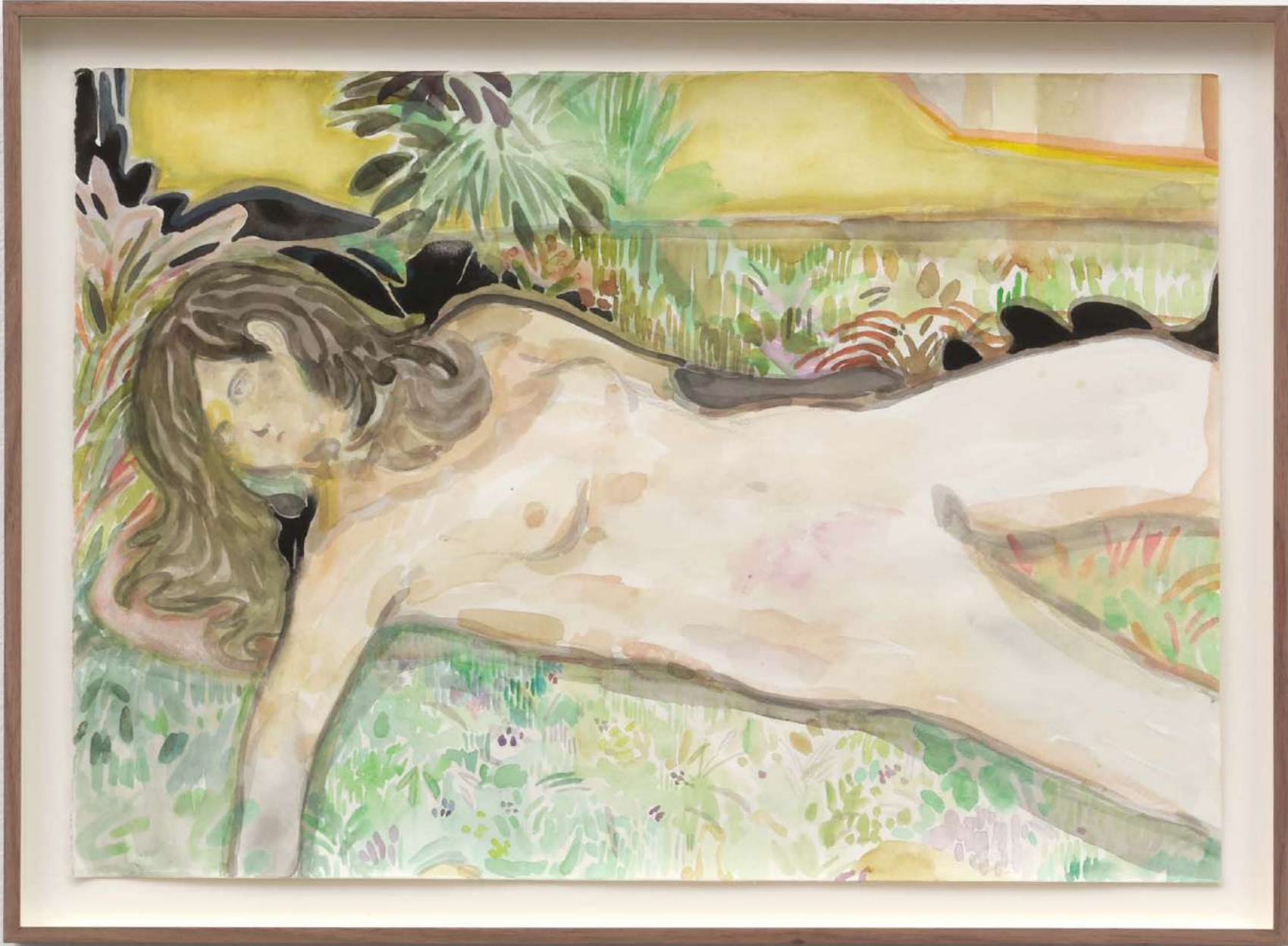
Untitled, 2023
Watercolor on paper
19 1/2 x 14 3/8 in
49.5 x 36.5 cm
(KAK23.033)

Untitled, 2023
Watercolor on paper
23 1/2 x 15 5/8 in
59.7 x 39.7 cm
(KAK23.036)





Untitled, 2021, Watercolor and ink (Sumi) on paper, 17 1/2 x 23 7/8 x 1 1/2 in (framed), 44.5 x 60.6 x 3.8 cm (framed), (KAK23.007)





Wondering, 2021
Watercolor and ink (Sumi) on paper
23 1/8 x 17 3/4 x 1 1/2 in (framed)
58.7 x 45.1 x 3.8 cm (framed)
(KAK23.010)

Untitled, 2021, watercolor and color pencil on paper, 14 1/2 x 18 1/2 x 1 1/2 in (framed), 36.8 x 47 x 3.8 cm (framed), (KAK23.009)



An abstract painting featuring a woman's face in the lower-left foreground. The face is rendered with soft, naturalistic tones of skin and dark hair. The background is a vibrant, textured composition of blue, green, and yellow brushstrokes, creating a sense of movement and depth. The overall style is expressive and painterly.

**SELECTED EXHIBITONS
AND PROJECTS**

SELECTED EXHIBITIONS AND PROJECTS

NOWHERE TO GO

2024

NINO MIER GALLERY
LOS ANGELES, CA, US

FLOATING LIKE A DREAM

2023

THE CABIN AND THE BUNKER LA
LOS ANGELES, CA, US

BODIES OF WATER

2023

DANIEL BENJAMIN GALLERY
LONDON, UK

NOWHERE TO GO

2024

NINO MIER GALLERY
LOS ANGELES, CA, US

Nino Mier Gallery is thrilled to announce *Nowhere To Go*, London-based artist Koshiro Akiyama's first solo exhibition with the gallery. A series of new, meditative acrylic paintings will be on view in Los Angeles from January 5 – February 17, 2024.

Nowhere To Go whisks figure and landscape into a hypnagogic purgatory in which tree-lined forests, smoldering sunsets, and verdant fields are rendered with layers of short, translucent brushstrokes. Each work appears half-crystallized, as if witnessed in motion or conjured in a dream state. Akiyama's figures share in such uncertainty: in *Confusion*, a nude figure reclines amidst a flurry of blue and green marks resembling a wooded enclave. An arm reaches around her head, though it is unclear whether the arm is her own or a stranger's. *Confusion*, like the exhibition at large, reaches for a truth that nevertheless remains elusive. Akiyama, lingering in a state of indeterminacy, asks viewers to instead focus on the artifice of recollection.

Feelings of melancholy and longing shoot through *Nowhere To Go*. Such affects are expressed in Akiyama's languid brushwork and rich color schemes, rather than through his figures' expressions. Faces are typically underrepresented or turned away from the viewer like fading memories. The interior lives of Akiyama's subjects may appear inaccessible, but their surrounding atmospheres hang thick with sentiment.

Though the paintings in *Nowhere To Go* are rooted in the artist's more personal reflections on life and loss, art historical referents appear throughout the exhibition. The aesthetic qualities of classical Japanese ink paintings merge with subject matter partially rooted in European modernism. *Unquiet Sea*, for instance, recalls the composition and velvety blue tones of Jean Auguste Ingres' *Grande Odalisque*, while Akiyama's meditations on figure and landscape recall the work of earlier Romantics who proclaimed the line between subject and environment to be porous. The poetic character of the work, in turn, recalls contemporary painter and ceramicist Leiko Ikemura's enigmatic worlds.

Despite such multifarious ties to the outside world, *Nowhere To Go* suggests a sense of congestion and fatalism, in title and in content. Nature, in Akiyama's hands, is not an airy expanse, but rather is congealed matter almost indistinguishable from figure and object. The claustrophobia of these scenes—the artifice of memory, the inaccessibility of interiority – is one only articulable through the expressive immediacy of paint.











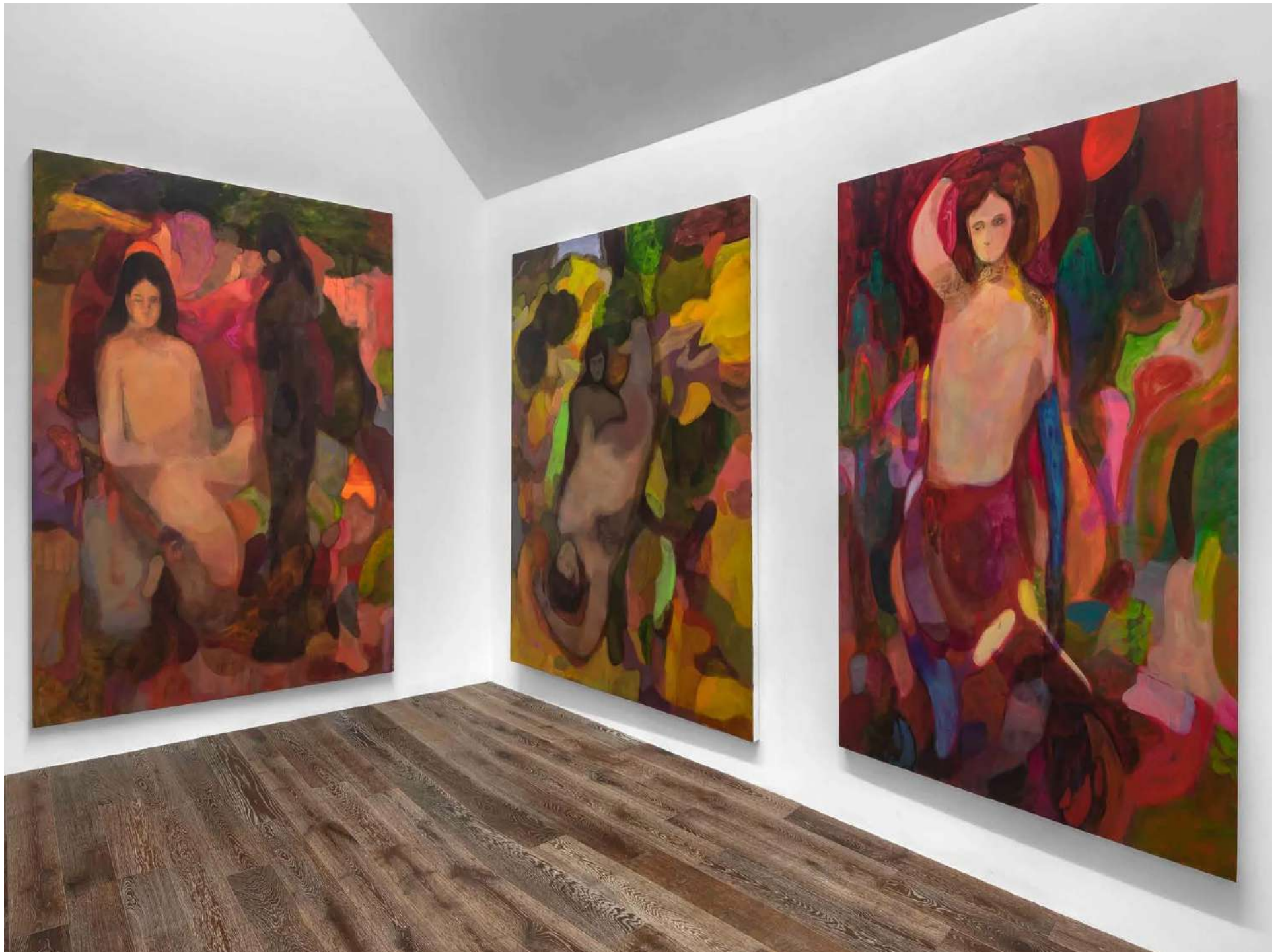


FLOATING LIKE A DREAM

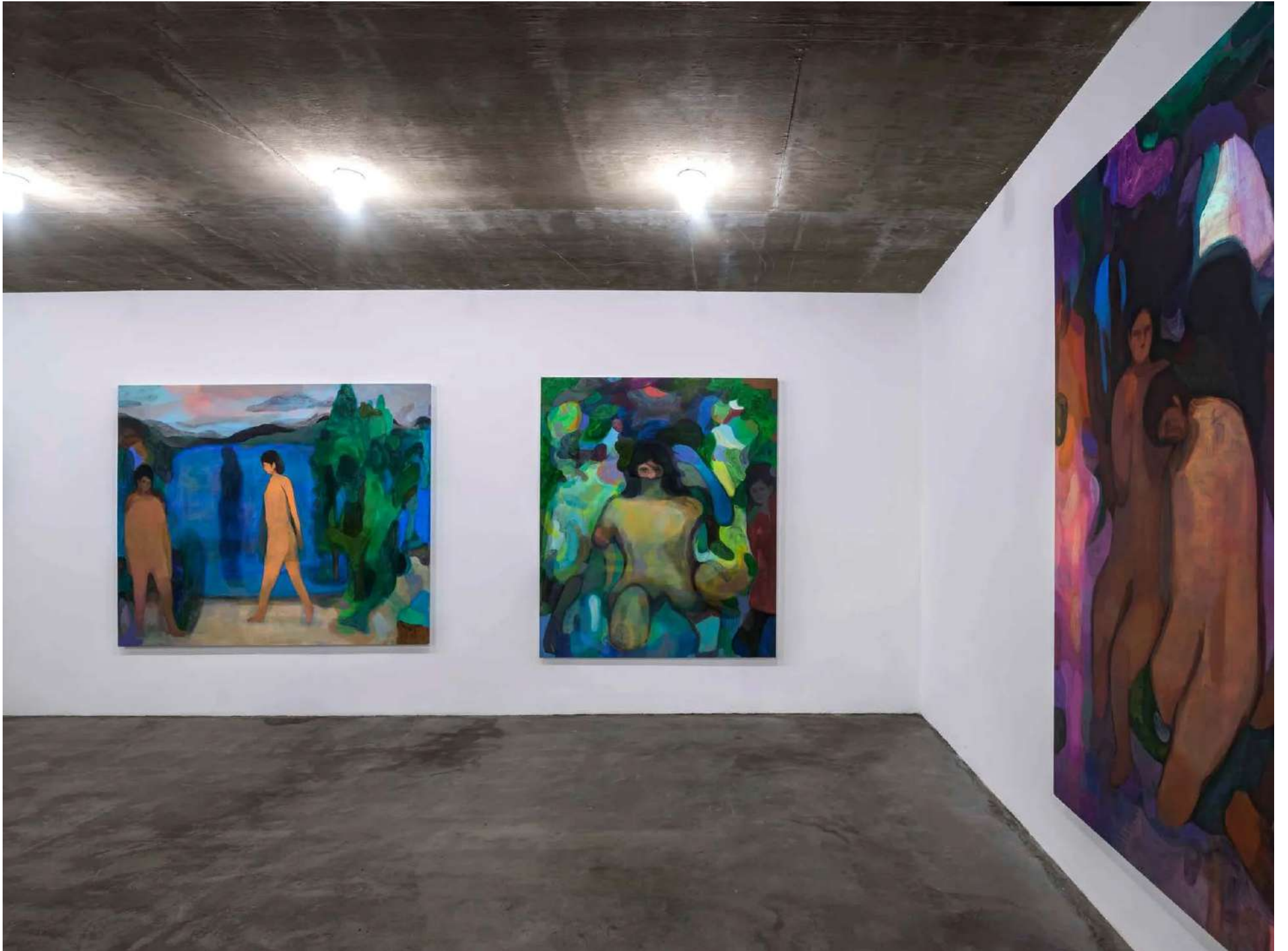
**2023
THE CABIN AND THE BUNKER LA
LOS ANGELE, CA, US**

Floating Like a Dream features a suite of new paintings by London-based, Japanese painter, Koshiro Akiyama. The artist creates an idealistic landscape that reflects on a psychological condition that deals not only with utopian ideals but also morbidity. In the mind, there is a constant shift between tension and relaxation, which weaves its intimate narratives and a sense of ambiguity into the work. Using a phenomenological and simple process he depicts deeply private and intimate spaces, with a sense of compassion.

Images courtesy of The Cabin LA









BODIES OF WATER

2023

**DANIEL BENJAMIN GALLERY
LONDON, UK**

Bodies of Water presents eight new paintings by Koshiro Akiyama in which the artist brings into play recurrent themes of idealistic landscapes. For his first solo exhibition in the United Kingdom, Akiyama has created intimate and melancholic works which, unlike his previous production, do not draw from photos and memories but are imagined experiences, imagined memories.

Koshiro Akiyama's oeuvre is inspired by the expressive and disturbing works of Edward Munch, from whom he has absorbed the potential of constructing illusionistic and dreamlike worlds, but with vibrant, and at times lurid, colours. His artistic philosophy is equally inspired by the writings of Simone Weil, the 'melancholy revolutionary', on absence and affliction - a feeling only the souls who are capable of experiencing spiritual joy can really encounter. His contemporary influences range from Dream Pop music to a hint of Yoshitomo Nara.

For Bodies of Water, Akiyama has painted eight timeless and warm images. To the artist painting is a meditative practice where, similarly to his personal life, the aftermath of experiencing a moment of emotional distress is usually a moment of 'catharsis'. The same happens to the viewers who at first experience a sense of foreboding but then let the paint drag them in and take them through the character's journey. The sensation one is left with is neither sinister nor comforting, but rather a feeling of transition between the two.

Bodies of water are ever-present in this series, and we can imagine the figures have bathed in them, moved through them, and then have come out washed away from sins, purified. Their bodies remain the same but their souls and their feelings have transformed. Although the figures in his paintings are presented as vulnerable, they also show resilience of the mind. They have experienced a moment of resolution and convey airy and expansive sensations; they are compassionate towards human beings and the nature around them. The viewer's mind is left to wander, lost in space and time. And the more your mind wanders, the more you can see.

Koshiro Akiyama describes his style as a 'psychological exploring', because through colour he translates his most profound emotions towards the world. What he masterfully conveys is a feeling of floating in a whirlwind of melodies, harmonies and dissonances, echoes and reverberations. A sense of hovering weightlessly over these dreamlike scenarios.

Images courtesy of Daniel Benjamin Gallery









An abstract painting with a textured, canvas-like surface. The composition is dominated by warm, earthy tones such as ochre, terracotta, and muted reds. A large, vertical, light-colored shape, possibly representing a human torso or a stylized figure, is the central focus. This shape is surrounded by darker, more complex forms in shades of brown, green, and blue. The overall style is expressive and gestural, with visible brushstrokes and a sense of depth. The text 'SELECTED PRESS' is centered horizontally and vertically over the light-colored shape.

SELECTED PRESS

SELECTED PRESS

JUXTAPOZ

MAY 2023

BY JUXTAPOZ EDITORIAL STAFF

SOHO HOUSE

JULY 2023

BY ANASTASIIA FEDOROVA

JUXTAPOZ

MAY 2023

Koshiro Akiyama's "Floating Like a Dream" Looks at Vulnerability and Resilience in the Human Mind

By Juxtapoz Editorial Staff



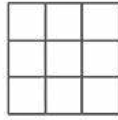
Courtesy of The Cabin, LA

The Cabin LA just opened *Floating Like a Dream*, a new body of work by London-based, Japanese painter, Koshiro Akiyama. The artist creates an idealistic landscape that reflects on a psychological condition that deals not only with utopian ideals but also morbidity. In the mind, there is a constant shift between tension and relaxation, which weaves its intimate narratives and a sense of ambiguity into the work. Using a phenomenological and simple process he depicts deeply private and intimate spaces, with a sense of compassion.

Influenced by the writings of Simone Weil (called by Susan Sontag "one of the most ... troubling witnesses to the modern travail of the spirit"), Koshiro's work is grounded upon a melancholy rumination originating from the moment of his mother's death. This event gave rise to both his melancholy and an impulse to escape from the inevitable fact of death.

Koshiro's works are based on photos and memories. The mediums he uses, especially acrylic, ink, and watercolor, are chosen to build up multiple transparent layers with fluid brushstrokes. Having absorbed the expressive, disturbing potential of Eduard Munch's work, he uses vibrant, even lurid, colors and with these, he constructs illusionistic and dream-like worlds. The locations are often in an outdoor setting, such as the seaside, a ski resort, or a park. Koshiro employs a direct, intuitive process to use these settings to create psychologically probing paintings.

Another significant factor in the aftermath of a period of depression is the moment of huge consolation: 'catharsis.' This moment comes close to freeing you from anxiety or despair. In Koshiro's work, he attempts to express his feeling about it. It's a meditative practice. Although the figures in his paintings are presented as vulnerable, he also tries to show the resilience of the human mind which is a symbol of power and beauty.



SOHO HOUSE

MAY 2023

Meet London's graduate talents in the Soho House art collection

By Anastasiia Fedorova



Cecconi's Bicester Village. Courtesy of Soho House

Spread across 40 clubs worldwide, the Soho House art collection allows members to explore many artistic movements. From delving deep into local creative landscapes (Holloway House or Soho House Austin) to the history of the site (Soho Warehouse), or a particular medium such as portraiture (Cecconi's Bicester Village), every individual collection transcends eras and contexts. Importantly, we also feature works by recently graduated artists.

With graduate shows from colleges like the Royal College of Art and Camberwell College of Arts happening in London this month, we take a closer look at works by those who have joined the Soho House collection in the last three years.

Koshiro Akiyama, 'The Girl At The Theatre' **Cecconi's Bicester Village**

Born in Tokyo, Koshiro Akiyama is a graduate of Camberwell College of Arts (MA fine art, painting 2021). His work is informed by Japanese painting methods and techniques, using a mix of mineral pigments and animal glue to make paint. With multiple layers in acrylic, ink and watercolour, the artist creates unique textures for his paintings. Tapping into personal and collective memories, Akiyama's paintings depict dream-like worlds that evoke intimate spaces, parks and resorts. One of his atmospheric paintings is included in the collection at Cecconi's Bicester Village in Oxfordshire, dedicated entirely to portraiture.

An abstract painting with a textured, layered appearance. The colors are vibrant and varied, including shades of green, yellow, purple, brown, and white. The brushstrokes are visible, creating a sense of depth and movement. The overall composition is dynamic and non-representational.

CURRICULUM VITAE

KOSHIRO AKIYAMA

b. 1994, Tokyo, JP
Lives and works in London, UK

EDUCATION

2021 MFA, Camberwell College of Arts, London, UK
2018 BA and MA, Tokyo University of the Arts, Tokyo, JP

SOLO EXHIBITIONS

2024 Nino Mier Gallery, Los Angeles, CA (*forthcoming*)

2023 *Floating Like A Dream*, The Cabin LA & The Bunker LA, Los Angeles, CA, US
Bodies of Water, Daniel Benjamin Gallery, London, UK
Gravity and Levitation, Fabien Fryns Gallery, Dubai, UAE

2022 *An Allegory of Love and Time*, New Normal Project, London, UK

2018 Research Project 2018, The University Art Museum, Tokyo University of the Arts, Tokyo, JP

GROUP EXHIBITIONS

2023 *Root Sysyems: An Exhibition of Works on Paper*, Nino Mier Gallery, Los Angeles, CA, US (*forthcoming*)
Nature Holds a Mirror, Casa Astronoma, curated by Ambar Quijano, Mexico City, MX

2022 *Do You Feel Me*, Sapling Gallery, London, UK
Life is a Maze Which We Never Escape, Daniel Benjamin Gallery, London, UK
Group Representation, Moth Flower Gallery, Online
Liquid Friction, Ambar Quijano, Online
London Art Fair, Rhodes Contemporary Gallery, Business Design Centre, London, UK
RWS open 2022, Bankside Gallery, London, UK
Sunny Art Prize 2022, Sunny Art Centre, London, UK
Carnival of Clouds, Contemporary Works on Paper, Janet Rady Fine Art, Online

2018 *Ichikenten*, Exhibition hall in Tokyo University of the Arts, Tokyo, JP
The graduation works exhibition of Tokyo University of the Arts, Tokyo Metropolitan Art Museum, Tokyo, JP

2017 Ishimoto Sho Nihonga Exhibition, Sekisho Art Museum, Shimane, JP

RESIDENCIES

2023 The Cabin by Danny First, Los Angeles, CA, US
2022 Unit 1 Gallery Residency, London, UK

PUBLIC & PRIVATE COLLECTIONS

Xiao Museum
Soho House Collection
Nahmad Collection

An abstract painting with thick, expressive brushstrokes. The left side is dominated by various shades of green, from light lime to dark forest green. The right side features a figure with a yellow face and a purple head covering, set against a dark, textured background. The overall style is gestural and expressive.

NINO MIER GALLERY

LOS ANGELES

info@miergallery.com
+1 323 498 5957

BRUSSELS

brussels@miergallery.com
+32 2 414 86 00

NEW YORK

newyork@miergallery.com
SoHo | +1 212 343 4317
TriBeCA | +1 212 268 9055

MARFA

marfa@miergallery.com